



**ASSORTMENT**

## MPX GORE-TEX PRO OFFSHORE SMOCK 80824



169  
True Red



991  
Black



560  
Brilliant Blue



841  
Platinum



### MPX GORE-TEX PRO OFFSHORE SMOCK

Constructed from 3-layer GORE-TEX® Pro, this smock offers outstanding waterproof protection that's also incredibly breathable for total comfort. Superior articulation is delivered by reduced seams - a technique learnt from the development of the pioneering HPX Collection. The heat retentive grid fleece lined funnel and hood pod, with a highly protective spume that benefits from improved adjustability.

#### Features

- 3-layer GORE-TEX Pro laminate for high performance breathability and waterproof and windproof protection
- Photoluminescent reflectors glow in the dark to keep you visible at night
- Grid fleece lined funnel neck for heat retention
- Raglan sleeves allow greater freedom of movement
- Darted sleeve construction
- External hypalon hang loop for decreased drying times
- Ergonomic, Velco-adjusted cuffs
- Adjustable hem for a tailored fit and heat retention



# MPX GORE-TEX PRO OFFSHORE JACKET

## 80823

**MUSTO**



169  
True Red



991  
Black



560  
Brilliant Blue



841  
Platinum



## MPX GORE-TEX PRO OFFSHORE JACKET

Featuring a 250g reduction in weight - a 15% reduction from previous versions for enhanced freedom of movement. This MPX GORE-TEX® Pro Offshore Jacket features an improved fit for the new season, whilst seam reduction and garment construction techniques learned from the pioneering HPX Collection have been utilised to evolve this new MPX range. A 3-layer GORE-TEX® Pro fabric construction ensures outstanding waterproof protection that's also incredibly breathable. The jacket features a heat retentive grid fleece lined funnel and hood pod, with a highly protective spume with improved adjustability.

### Features

- Fully adjustable, pre-shaped spume visor to protect your face from spray and rain
- Photoluminescent reflectors glow in the dark to keep you visible at night
- External storm flap with a Velcro closure for a secure seal
- 3-layer GORE-TEX Pro laminate for high performance breathability and waterproof and windproof protection
- Articulated sleeves for greater freedom of movement
- Grid fleece lining in the high collar and crown of the hood for warmth
- Shock cord hem adjustment and twin sprung cordlock with rubberised finish

# WOMEN'S MPX GORE-TEX PRO OFFSHORE JACKET 80909

**MUSTO**



169  
True Red



991  
Black



841  
Platinum



## WOMEN'S MPX GORE-TEX PRO OFFSHORE JACKET

Featuring a 250g reduction in weight - a 15% reduction from previous versions for enhanced freedom of movement. This Women's MPX GORE-TEX® Pro Offshore Jacket features an improved fit for the new season, whilst seam reduction and garment construction techniques learned from the pioneering HPX Collection have been utilised to evolve this new MPX range. A 3-layer GORE-TEX® Pro fabric construction ensures outstanding waterproof protection that's also incredibly breathable. The jacket features a heat retentive grid fleece lined funnel and hood pod, with a highly protective spume with improved adjustability.

### Features

- Fully adjustable, pre-shaped spume visor to protect your face from spray and rain
- Photoluminescent reflectors glow in the dark to keep you visible at night
- External storm flap with a Velcro closure for a secure seal
- 3-layer GORE-TEX Pro laminate for high performance breathability and waterproof and windproof protection
- Articulated sleeves for greater freedom of movement
- Grid fleece lining in the high collar and crown of the hood for warmth
- Shock cord hem adjustment and twin sprung cordlock with rubberised finish



# MPX GORE-TEX PRO RACE JACKET 80826

**MUSTO**



841  
Platinum



991  
Black



GORE-TEX

DWR



## MPX GORE-TEX PRO RACE JACKET

Constructed from advanced 3-layer GORE-TEX® PRO fabric, the MPX Pro Race Jacket allows you to race unrestricted and fully protected in the most extreme weather conditions. A foldaway, drawcord-adjusted hood enhances the garment's exceptional waterproof design while a brushed tricot lining ensures complete comfort. A superior range of motion is offered through the garment's anatomically constructed articulated sleeves.

### Features

- Hood with stiffened peak and drainage channels to encourage water to run off
- Water-resistant VISLON pocket zips
- Tricot lined collar for comfort
- Shell hang loop for decreased drying times
- Articulated sleeves for greater freedom of movement
- Shell-bonded pocket bags

# MPX GORE-TEX PRO RACE SMOCK 80827

**MUSTO**



841  
Platinum



991  
Black



**GORE-TEX**

**DWR**

**TAPED SEAMS**

## MPX GORE-TEX PRO RACE SMOCK

An advanced 3-layer GORE-TEX® PRO construction ensures that the MPX Pro Race Smock allows you to race unrestricted and fully protected in extreme weather conditions. A 3mm neoprene waistband with shell fabric side panels combines a watertight seal with superior freedom of movement so you can focus on the competition ahead.

### Features

- Laser cut drainage holes in all pockets to allow water to escape
- Velcro secured, soft dan elastic collar for a comfortable but secure neck seal
- Articulated sleeves for greater freedom of movement
- Water repellent zips
- Bonded hang loop
- 3mm neoprene waistband with shell fabric side panels

# MPX GORE-TEX PRO RACE DRY SMOCK 80828

**MUSTO**



991  
Black



## MPX GORE-TEX PRO RACE DRY SMOCK

The MPX Pro Race Smock features an advanced 3-layer GORE-TEX® PRO construction and a latex neck seal that ensures near drysuit protection in the most extreme weather conditions. A 3mm neoprene waistband with shell fabric side panels combines a watertight seal with superior freedom of movement so you can focus on the competition ahead.

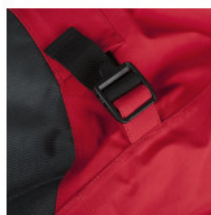
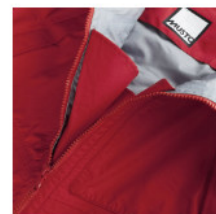
### Features

- Laser cut drainage holes in all pockets to allow water to escape
- Articulated sleeves for greater freedom of movement
- Water repellent zips
- Bonded hang loop
- 3mm neoprene waistband with shell fabric side panels
- Latex neck seal



# MPX GORE-TEX PRO OFFSHORE TROUSERS 80851

**MUSTO**



169  
True Red



991  
Black



972  
Dark Grey



## MPX GORE-TEX PRO OFFSHORE TROUSERS

Featuring a 200g reduction in weight to greatly enhance freedom of movement and comfort. Designed to deliver an exceptional level of protection to the offshore sailor, these MPX Offshore Trousers have been constructed from cutting-edge materials. Made from 3-layer GORE-TEX® Pro fabric, this garment supplies outstanding waterproof, windproof and durable protection. Highly breathable, these offshore trousers ensure complete comfort when active. Articulated knee and seat reinforcements combine freedom of movement with enhanced durability.

### Features

- Elasticated armholes for a flexible fit
- Two handwarmer pockets
- Articulated seat and knees provide added freedom of movement
- 3-layer GORE-TEX laminate for incredible waterproof and windproof protection and breathability
- External hypalon hang loop for decreased drying times
- Tool strap to allow you to attach a multi-tool pouch
- Hardwearing CORDURA® patches on the seat and knees with abrasion resistant seam constructions

# WOMEN'S MPX GORE-TEX PRO OFFSHORE TROUSERS

## 80914

**MUSTO**



169  
True Red



991  
Black



## WOMEN'S MPX GORE-TEX PRO OFFSHORE TROUSERS

Featuring a 200g reduction in weight to greatly enhance freedom of movement and comfort. Designed to deliver an exceptional level of protection to the offshore sailor, these Women's MPX GORE-TEX® Pro Offshore Trousers have been constructed from cutting-edge materials. Made from 3-layer GORE-TEX® Pro fabric, this garment supplies outstanding waterproof, windproof and durable protection. Highly breathable, these offshore trousers ensure complete comfort when active. Articulated knee and seat reinforcements combine freedom of movement with enhanced durability.

### Features

- Elasticated armholes for a flexible fit
- Two handwarmer pockets
- Articulated seat and knees provide added freedom of movement
- 3-layer GORE-TEX laminate for incredible waterproof and windproof protection and breathability
- External hypalon hang loop for decreased drying times
- Tool strap to allow you to attach a multi-tool pouch
- Hardwearing CORDURA® patches on the seat and knees with abrasion resistant seam constructions

# MPX GORE-TEX RACE SALOPETTE 80808

**MUSTO**



841  
Platinum



991  
Black



## MPX GORE-TEX RACE SALOPETTE

These MPX Race Salopettes have been constructed from new, innovative 3-layer GORE-TEX® Pro fabric with GORE™ Micro Grid Backer technology to ensure lightweight and highly breathable waterproof performance. A high chest fit with underarm elastic delivers increased protection when racing. Super abrasion resistant CORDURA® knee and seat reinforcement patches ensure durability even with prolonged use.

### Features

- 3-layer GORE-TEX Pro laminate for high performance breathability and waterproof and windproof protection
- In-seam reflective strips to keep you visible in low light
- Elasticated underarms for a comfort fit
- Hardwearing CORDURA® patches on the seat and knees with abrasion resistant seam constructions
- High chest fit for extra weather protection
- 2-way YKK® VISLON® front zip with gusset for easy access
- Thigh pocket, laser cut and bonded with reflective PU with a water-resistant zip



## LPX GORE-TEX AERO JACKET 82100

**MUSTO**



169  
True Red  
New Product



990  
Black  
New Product



**NEW**



### LPX GORE-TEX AERO JACKET

#### Features

- 2-layer GORE-TEX Infinium fabric
- Fully taped seams
- Underarm gusset and articulated sleeves provide optimal freedom of movement
- Integrated hood with bonded drainage channel
- Laser cut pocket drainage
- YKK® VT10 AquaGuard® front and pocket zippers with plastic pullers
- Two-way centre front zipper
- Concealed hood opening cord locks
- Hem cord adjustable from inside pocket bag
- Reflective film at shoulder seam
- Adjustable self-fabric bonded cuff tab

# LPX GORE-TEX JACKET

## 81206

**MUSTO**



841  
Platinum



991  
Black



169  
True Red



### LPX GORE-TEX JACKET

Inspired by Musto's original LPX Jacket, this lightweight and breathable LPX GORE-TEX® Jacket is ideal for high-performance inshore or coastal sailing in warmer conditions. Layer up for cold weather protection. Made from durable polyester 3-layer GORE-TEX®, this jacket ensures resilient protection for many seasons to come. A brushed tricot collar provides heat retention and comfort next-to-skin, while a pared-back design and articulated elbows deliver complete freedom of movement.

#### Features

- Brushed tricot-lined collar
- External hypalon hang loop for decreased drying times
- YKK® AquaGuard® Zip for a fully waterproof closure
- 3-layer GORE-TEX laminate for incredible waterproof and windproof protection and breathability
- Detachable and adjustable hood with a stiffened peak to keep run-off water away from your face
- Sleeve pocket for easy storage of small essentials

# LPX GORE-TEX SMOCK 81207

**MUSTO**



841  
Platinum



991  
Black



169  
True Red



GORE-TEX

DWR

TAPED SEAMS

## LPX GORE-TEX SMOCK

Designed for the inshore racing sailor, the LPX GORE-TEX® Smock has been made from 3-layer, polyester GORE-TEX® fabric for exceptional waterproof protection that endures. An adjustable PU-coated collar and cuffs and a neoprene hem deliver a watertight seal while a tilted neck tab allows for a tailored, ergonomic fit.

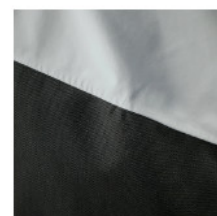
### Features

- 3-layer GORE-TEX laminate for incredible waterproof and windproof protection and breathability
- Neoprene hem for a water-resistant seal
- Adjustable PU cuffs and collar to prevent water entry
- Elasticated self-fabric neck and cuff tabs
- Tilted neck tab for an ergonomic fit that reduced water ingress
- Off-centre jacket zip for a sporty finish
- Two side pockets with two internal pocket bags
- Articulated sleeves for greater freedom of movement



# LPX GORE-TEX SALOPETTE 81212

**MUSTO**



841  
Platinum



991  
Black



GORE-TEX

DWR



## LPX GORE-TEX SALOPETTE

Made to deliver impeccable protection and dynamic movement. These LPX GORE-TEX® Salopettes feature a durable polyester 3-layer GORE-TEX® construction for exceptional waterproof protection while abrasion resistant seat and knees will prolong the longevity of this garment. Created with an elasticated waist and stretch jersey double-layer shoulder panels for complete freedom of movement.

### Features

- 3-layer GORE-TEX laminate for incredible waterproof and windproof protection and breathability
- 600 denier reinforcement at the seat and knees for exceptional abrasion resistance
- Crotch gusset for comfort and ease of movement
- Elasticated waistband for tailored comfort
- Bellow pockets with side entry handwarmer pockets and YKK® AquaGuard® zip closures
- 2-way zip for comfort as you sit
- Lightweight ergonomic design for comfort over long periods

## LPX GORE-TEX SHORT 81209

**MUSTO**



841  
Platinum



991  
Black



GORE-TEX

DWR

TAPED SEAMS

### LPX GORE-TEX SHORT

When on a wet boat in warm conditions, reach for your LPX GORE-TEX® Shorts. Reinforced in the high-wear seat area with 600 denier abrasion resistant fabric, this garment will be an enduring kit bag essential. A high back with a lightly padded waistband provides coverage as you move, while a double belt loop makes for easy attachment of tools.

#### Features

- 2 bellow patch pockets
- Zipped pockets for secure storage of your essentials
- Belt loops including a double belt loop for added durability for attaching items
- 600 denier seat reinforcement for prolonged durability
- Double snap front closure for a secure fit
- High waist and a lightly padded waistband for enhanced coverage

## BR2 OFFSHORE JACKET 80811



991  
Black/Black



560  
Brilliant  
Blue/Black



599  
True Navy/True  
Navy



169  
True Red/True  
Red



### BR2 OFFSHORE JACKET

Exceptionally waterproof and breathable. This BR2 Offshore Jacket is the ultimate foul weather protection for offshore sailing. The double cuffs, hem and double storm flap with a drainage channel over the zip and the roll-away fluorescent hood work together to ensure peerless comfort. An anatomical, high grade fleece lined collar, hood and hand warmer pockets add warmth while prismatic reflectors provide visibility for safety in low light.

#### Features

- 2-layer waterproof and breathable fabric to Musto's stringent BR2 standard, for prolonged torrential downpours
- Articulated sleeves for greater freedom of movement
- The fluorescent hood rolls away and is 2-way adjustable for weather protection
- Double storm flap with drainage channel over a 2-way YKK® zip for an impenetrable front closure
- Grid fleece lined collar for comfort and warmth
- Double cuffs with adjustable outer cuffs for near drysuit protection



# WOMEN'S BR2 OFFSHORE JACKET 80902

**MUSTO**



991  
Black/Black



560  
Brilliant  
Blue/Black



182  
Cerise/White



599  
True Navy/True  
Navy



169  
True Red/True  
Red



002  
White/True Navy



**DWR**



## WOMEN'S BR2 OFFSHORE JACKET

Exceptionally waterproof and breathable. This Women's BR2 Offshore Jacket is the ultimate foul weather protection for offshore sailing. The double cuffs, hem and double storm flap with a drainage channel over the zip and the roll-away fluorescent hood work together to ensure peerless comfort. An anatomical, high grade fleece lined collar, hood and hand warmer pockets add warmth while prismatic reflectors provide visibility for safety in low light.

### Features

- 2-layer waterproof and breathable fabric to Musto's stringent BR2 standard, for prolonged torrential downpours
- Articulated sleeves for greater freedom of movement
- The fluorescent hood rolls away and is 2-way adjustable for weather protection
- Double storm flap with drainage channel over a 2-way YKK® zip for an impenetrable front closure
- Grid fleece lined collar for comfort and warmth
- Double cuffs with adjustable outer cuffs for near drysuit protection
- Mesh lined for comfort against your skin and improved air circulation

# BR2 COASTAL JACKET 80812

**MUSTO**



169  
True Red/Black



599  
True Navy/True Navy



991  
Black/Black



**DWR**

**TAPED SEAMS**  
ALL SEAM LINES ARE TAPED FOR FULL WATERPROOF PROTECTION

## BR2 COASTAL JACKET

The BR2 Coastal Jacket Waterproof provides highly breathable waterproof protection for sailing on the coast. An articulated cut allows freedom of movement ideal for the active sailor. High-performance, proprietary BR2 fabric allows perspiration to escape. Reflective details keep you visible in low light. A double storm flap, fluorescent hood and fleece lined handwarmer pockets behind the large patch pockets are designed to keep you exceptionally warm and dry.

### Features

- 2-layer waterproof and breathable fabric to Musto's stringent BR2 standard, for prolonged torrential downpours
- The fluorescent hood rolls away and is 2-way adjustable for weather protection
- Articulated sleeves for greater freedom of movement
- Double cuffs with adjustable outer cuffs for near drysuit protection
- Raglan sleeves allow greater freedom of movement
- Prismatic reflectors and in-seam reflective details to keep you visible in low light
- Storm flap over the zip to prevent rain and spray ingress
- Fleece lined, high collar for warmth and protection against the spray and rain

# WOMEN'S BR2 COASTAL JACKET 80903

**MUSTO**



169  
True Red/Black



991  
Black/Black



598  
True Navy/True Navy



## WOMEN'S BR2 COASTAL JACKET

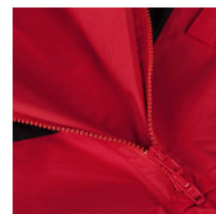
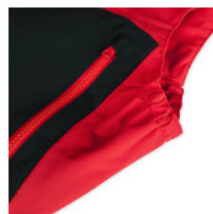
The Women's BR2 Coastal Jacket Waterproof provides highly breathable waterproof protection up to Musto BR2 standard when sailing on the coast. An articulated cut allows freedom of movement ideal for the active sailor. High-performance, proprietary BR2 fabric allows perspiration to escape. Reflective details keep you visible in low light. A double storm flap, fluorescent hood and fleece lined handwarmer pockets behind the large patch pockets are designed to keep you exceptionally warm and dry.

### Features

- YKK® VISLON® zip for a secure closure
- Prismatic reflectors to keep you visible in low light
- In-seam reflective strips to keep you visible in low light
- Storm flap over the zip to prevent rain and spray ingress
- Fully seam taped construction for a waterproof seal
- 2-layer, lightweight, waterproof and breathable fabric to Musto's stringent BR2 standard, for prolonged torrential downpours
- Double cuffs with adjustable outer cuffs for near drysuit protection
- 2 handwarmer pockets, 2 cargo pockets plus 1 internal zipped pocket

# BR2 OFFSHORE TROUSERS 80857

**MUSTO**



991  
Black/Black



601  
True Navy/Black



169  
True Red/Black



**DWR**

**TAPED SEAMS**

**YKK®**

## BR2 OFFSHORE TROUSERS

Built for the serious offshore sailor and engineered for protection, these BR2 Offshore Trousers are the ideal foul weather trousers when out at sea. Breathable and durably waterproof, you will stay dry and able to move freely, even with layers on, with the articulated seat and knee constructions. These hi-fit trousers are designed with wear resistant seat and knee patches and the water resistant pockets ensure your personal items stay safe and dry. Comfort and performance combine to give you all the protection you need at sea.

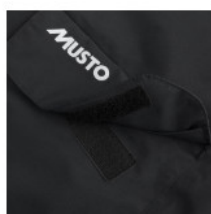
### Features

- 2-layer waterproof and breathable fabric to Musto's stringent BR2 standard, for prolonged torrential downpours
- Hi-fit design for added protection with back waist adjustment and elasticated underarms and braces
- Elasticated underarms for a comfort fit
- Detachable multi-tool pouch for easy access to tools when needed
- Fabric covered, adjustable shoulder braces with Velcro to prevent slipping for a snug fit
- 2-way YKK® VISLON® front zip with gusset for easy access
- Fully seam taped construction for a waterproof seal
- Velcro adjustable cuffs keep out rain and spray



# WOMEN'S BR2 OFFSHORE TROUSERS 80917

**MUSTO**



991  
Black/Black



601  
True Navy/Black



169  
True Red/Black



**DWR**

**TAPED SEAMS**

**YKK®**

## WOMEN'S BR2 OFFSHORE TROUSERS

Built for the serious offshore sailor and engineered in a new feminine fit for comfort and protection, these Women's BR2 Offshore Trousers are ideal foul weather trousers when out at sea. Breathable and durably waterproof, you stay dry and able to move freely, even with layers on, with the articulated seat and knee constructions. These hi-fit trousers are designed with wear resistant seat and knee patches and the water resistant pockets ensure your personal items stay safe and dry. Comfort and performance combine to give you all the protection you need at sea.

### Features

- 2-layer waterproof and breathable fabric to Musto's stringent BR2 standard, for prolonged torrential downpours
- Hi-fit design for added protection with back waist adjustment and elasticated underarms and braces
- Elasticated underarms for a comfort fit
- Detachable multi-tool pouch for easy access to tools when needed
- Fabric covered, adjustable shoulder braces with Velcro to prevent slipping for a snug fit
- 2-way YKK® VISLON® front zip with gusset for easy access
- Fully seam taped construction for a waterproof seal
- Thigh cargo pocket with a water-deflecting closure to keep items dry

## BR1 INSHORE JACKET 81208

**MUSTO**



169  
True Red



560  
Brilliant Blue



991  
Black



598  
True Navy



**DWR**

**TAPED SEAMS**

### BR1 INSHORE JACKET

#### Features

- In-seam reflective strips to keep you visible in low light
- 2 handwarmer pockets to keep you warm and 2 cargo pockets to store essentials
- The fluorescent hood rolls away and is 2-way adjustable for weather protection
- Articulated sleeves for greater freedom of movement
- Reflective details keep you visible in low light
- YKK® VISLON® zip for a secure closure
- Fleece lined for warmth and comfort
- Dan elastic inner cuffs to prevent rain and spray entering

# WOMEN'S BR1 INSHORE JACKET 81221

**MUSTO**



169  
True Red



560  
Brilliant Blue



991  
Black



598  
True Navy



**DWR**

**TAPED SEAMS**

## WOMEN'S BR1 INSHORE JACKET

### Features

- Double storm flap with drainage channel covering zip
- 2-layer waterproof and breathable fabric to Musto's stringent BR1 standard
- Fleece lined, high collar for warmth and protection against the spray and rain
- In-seam reflective strips to keep you visible in low light
- Prismatic reflectors to keep you visible in low light
- The fluorescent hood rolls away and is 2-way adjustable for weather protection
- Mesh lined for comfort against your skin and improved air circulation
- 2 bellow patch pockets with side entry hand rest pockets behind

### Composition:

Main Fabric Shell: 100% Polyamide  
Lining: 100% Polyester Mesh  
Features polyurethane membrane and a polyurethane coating,  
WP: 5,000mm  
MVP: 3,000g/m2

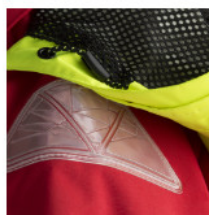
### Sizes:

8, 10, 12, 14, 16, 18

# JUNIOR BR1 COASTAL JACKET

## 80792

**MUSTO**



991  
Black



**DWR**



### JUNIOR BR1 COASTAL JACKET

The Junior BR1 Coastal Jacket supplies a superior level of waterproof and windproof protection. The double cuffs, storm flap zip guard and drawcord hem seal water out for exceptional dryness. The technical rollaway, fluorescent hood adds visibility as well as enhancing the garment's waterproof protection. The two fleece-lined pockets and collar keep your hands and neck warm in the cool coastal winds.

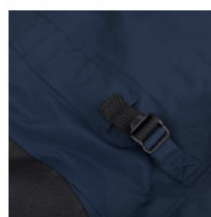
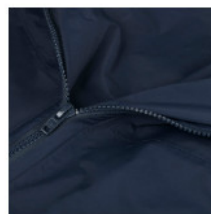
#### Features

- Photoluminescent reflectors glow in the dark to keep you visible at night
- 2-layer waterproof and breathable fabric to Musto's stringent BR1 standard
- The fluorescent hood rolls away and is 2-way adjustable for weather protection
- 2 handwarmer pockets to keep you warm and 2 cargo pockets to store essentials
- In-seam reflective strips to keep you visible in low light
- Articulated sleeves for greater freedom of movement
- YKK® VISLON® zip for a secure closure
- Fleece lined for warmth and comfort
- Dan elastic inner cuffs to prevent rain and spray entering



# BR1 TROUSERS 80855

**MUSTO**



169  
True Red/Black



991  
Black/Black



601  
True Navy/Black



**DWR**

**TAPED SEAMS**

## BR1 TROUSERS

Constructed from high grade proprietary BR1 durable, breathable fabric. These BR1 Trousers feature a super durable design, with abrasion resistant reinforcements on the knees and seat. Knees are articulated for full freedom of movement. Elasticated Velco® adjustable shoulder straps and elasticated underarms ensure a tailored, highly comfortable fit.

### Features

- 2-layer showerproof and breathable BR1 fabric
- Fabric covered, adjustable shoulder braces
- Hi-fit design for added protection with back waist adjustment and elasticated underarms and braces
- Elasticated underarms for a comfort fit
- Detachable multi-tool pouch for easy access to tools when needed
- 2-way YKK® VISLON® front zip with gusset for easy access
- Articulated knees for added freedom of movement
- Thigh cargo pocket with a water-deflecting closure to keep items dry
- Back waist adjuster to give a snug fit and reduce bulk
- Reinforced knees and seat for added durability and abrasion resistance

# WOMEN'S BR1 TROUSERS 80918

**MUSTO**



169  
True Red/Black



991  
Black/Black



601  
True Navy/Black



**DWR**

**TAPED SEAMS**

## WOMEN'S BR1 TROUSERS

Constructed from high grade proprietary BR1 durable, breathable fabric. These Women's BR1 Trousers feature a super durable design, with abrasion resistant reinforcements on the knees and seat. Knees are articulated for full freedom of movement. Elasticated Velco® adjustable shoulder straps and elasticated underarms ensure a tailored, highly comfortable fit.

### Features

- 2-layer showerproof and breathable fabric to Musto's stringent BR1 standard, for persistent downpours
- Fabric covered, adjustable shoulder braces
- Hi-fit design for added protection with back waist adjustment and elasticated underarms and braces
- Elasticated underarms for a comfort fit
- Detachable multi-tool pouch for easy access to tools when needed
- 2-way YKK® VISLON® front zip with gusset for easy access
- Articulated knees for added freedom of movement
- Thigh cargo pocket with a water-deflecting closure to keep items dry
- Hook and loop adjustable cuffs keep out rain and spray
- Reinforced knees and seat for added durability and abrasion resistance

## BR1 CORE TROUSERS 80892

**MUSTO**



169  
True Red



991  
Black



**DWR**

**TAPED SEAMS**

### BR1 CORE TROUSERS

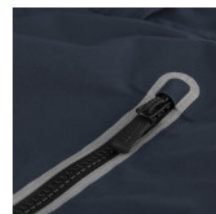
Built to deliver superior comfort when exposed to the elements, these BR1 Hi-Fit Trousers feature a proprietary fabric construction that supplies remarkable waterproof, windproof and breathable protection. The knees and seat have been reinforced for enhanced durability in high wear areas, while articulated knees ensure a full spectrum of motion. Elasticated braces, underarms and Velco-adjusted ankles offer a snug, custom fit.

#### Features

- 2-layer showerproof and breathable fabric to Musto's stringent BR1 standard, for persistent downpours
- Hi-fit design for added protection with an elasticated back waist, underarms and braces
- Gusset panel for durability
- Shell hang loop for decreased drying times
- Articulated knees for added freedom of movement
- Hook and loop adjustable ankles to keep out rain and spray
- Overlaid seat and knee panels for durability
- All seams sewn and taped for superior waterproof protection
- Thigh patch pocket with drainage hole

## BR1 HI-BACK TROUSERS 80891

**MUSTO**



598  
True Navy



991  
Black



**DWR**

**TAPED SEAMS**

### BR1 HI-BACK TROUSERS

Built for wearing on your RIB or powerboat, these BR1 Hi-Back Trousers offer remarkable waterproof, windproof and breathable protection in torrential rain. A reinforced seat and hems, withstand regular wear on the boat and the zip access points to your trouser pockets beneath allow you to store essentials. The shaped back of the waist provides enhanced coverage.

#### Features

- 2-layer showerproof and breathable fabric to Musto's stringent BR1 standard, for persistent downpours
- Belt loops at the waist for secure, tailored wear with a belt
- Hook and loop adjustable ankles to keep out rain and spray
- Shaped waistband with a high back waist for added coverage when active
- Elasticated back waist for a comfort fit
- Reflective details keep you visible in low light
- Crotch gusset for comfort and ease of movement
- Zip fly with two snap buttons and a hook and bar closure
- 2 zipped access points to your trouser pockets beneath
- Reinforced seat and hems for added durability



## JUNIOR BR1 TROUSERS 80556

**MUSTO**



991  
Black/Black



**DWR**



### JUNIOR BR1 TROUSERS

Waterproof, breathable and durable. These incredible Junior BR1 Trousers feature a hi-fit design, constructed from resilient polyamide fabric with abrasion resistant patches in high-wear areas. Articulated knees offer a superior freedom of movement. Elasticated Velco®-adjustable shoulder straps and elasticated underarms supply impeccable comfort when active. Pair them with the BR1 Jacket for complete protection.

#### Features

- 2-layer showerproof and breathable fabric to Musto's stringent BR1 standard, for persistent downpours
- Fabric covered, adjustable shoulder braces
- Hi-fit design for added protection with back waist adjustment and elasticated underarms and braces
- Elasticated underarms for a comfort fit
- Detachable multi-tool pouch for easy access to tools when needed
- 2-way YKK® VISLON® front zip with gusset for easy access
- Back waist adjuster to give a snug fit and reduce bulk
- Articulated knees for added freedom of movement
- Thigh cargo pocket with a water-deflecting closure to keep items dry
- Reinforced knees and seat for added durability and abrasion resistance

## THERMAL BASE LAYER LONG SLEEVE TOP 80843



972  
Dark Grey Marl

### THERMAL BASE LAYER LONG SLEEVE TOP

#### Features

- Breathable, wicking and fast drying fabric to keep you cool and dry
- Twin needle stitch hem and cuffs
- Funnel neck for heat retention
- Raglan sleeves allow greater freedom of movement
- Anti-bacterial treatment to prevent odour

**Composition:** 67% Polyester, 29% Polyamide, 4% Elastane

**Sizes:** XS, S, M, L, XL, 2XL

# THERMAL BASE LAYER TROUSERS

## 80844

**MUSTO**



972

Dark Grey Marl

## THERMAL BASE LAYER TROUSERS

### Features

- Breathable, wicking and fast drying fabric to keep you cool and dry
- Anti-bacterial treatment to prevent odour
- Twin needle cuffs for a clean finish

### Composition:

67% Polyester, 29% Polyamide, 4% Elastane

### Sizes:

XS, S, M, L, XL, 2XL

# ACTIVE BASE LAYER LONG SLEEVE TOP 80880

**MUSTO**



991  
Black

**HIGH WICKING**    **NILIT® BODYFRESH**

## ACTIVE BASE LAYER LONG SLEEVE TOP

With minimal seams for maximum comfort beneath outer layers, this fast wicking Active Base Layer Long Sleeve Top is designed for high energy activities. Different knits and weaves have been strategically placed for exceptional muscle support and heat retention. Anti-bacterial NILIT® Bodyfresh treatment prevents odour when wearing the top over extended periods.

### Features

- NILIT® BodyFresh prevents bacteria growth to eliminate odour and keep you fresh
- Variable knits and weaves, including a 3D protective knit, strategically placed to support and protect muscles, organs and joints
- A mesh knit in high heat areas for ventilation and honeycomb thermal knit for heat retention on key areas
- High wicking fabric technology draws moisture away from the skin to regulate body temperature for comfort

### Composition:

56% Polyamide, 40% Polypropylene, 4% Elastane  
Antibacterial finish

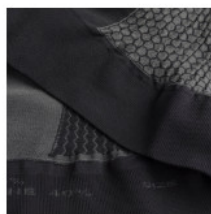
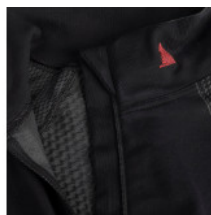
### Sizes:

XS/S, M/L, XL/2XL



# ACTIVE BASE LAYER ZIP NECK TOP 80881

**MUSTO**



991  
Black

**HIGH WICKING**    **NILIT® BODYFRESH**

## ACTIVE BASE LAYER ZIP NECK TOP

With minimal seams for maximum comfort beneath outer layers, this fast wicking Active Base Layer Zip Neck Top is designed for high energy activities. Different knits and weaves have been strategically placed for exceptional muscle support and heat retention. Anti-bacterial NILIT® Bodyfresh treatment prevents odour when wearing the top over extended periods.

### Features

- NILIT® BodyFresh prevents bacteria growth to eliminate odour and keep you fresh
- Variable knits and weaves, including a 3D protective knit, strategically placed to support and protect muscles, organs and joints
- A mesh knit in high heat areas for ventilation and honeycomb thermal knit for heat retention on key areas
- High wicking fabric technology draws moisture away from the skin to regulate body temperature for comfort

### Composition:

56% Polyamide, 40% Polypropylene, 4% Elastane  
Antibacterial finish

### Sizes:

XS/S, M/L, XL/2XL

# WOMEN'S ACTIVE BASE LAYER LONG SLEEVE TOP 80912

**MUSTO**



991  
Black

**HIGH WICKING**    **NILIT® BODYFRESH**

## WOMEN'S ACTIVE BASE LAYER LONG SLEEVE TOP

With minimal seams for maximum comfort beneath outer layers, this fast wicking Women's Active Base Layer Long Sleeve Top is designed for high energy activities. Different knitting and weaving techniques are strategically placed for muscle support and heat retention to help body recovery, injury prevention and to body climate control. Plus, anti-bacterial NILIT® Bodyfresh treatment prevents odour when wearing the top over extended periods.

### Features

- NILIT® BodyFresh prevents bacteria growth to eliminate odour and keep you fresh
- Variable knits and weaves, including a 3D protective knit, strategically placed to support and protect muscles, organs and joints
- A mesh knit in high heat areas for ventilation and honeycomb thermal knit for heat retention on key areas
- High wicking fabric technology draws moisture away from the skin to regulate body temperature for comfort

### Composition:

56% Polyamide, 40% Polypropylene, 4% Elastane  
Antibacterial finish

### Sizes:

8/10, 12/14, 16/18

# ACTIVE BASE LAYER TROUSERS

## 80882

**MUSTO**



991  
Black

**HIGH WICKING** NILIT® BODYFRESH

### ACTIVE BASE LAYER TROUSERS

With their seamless construction, these Active Base Layer Trousers offer ultimate comfort beneath layers. They wick away moisture from your body and regulate your temperature. Different knits and weaves have been strategically placed for exceptional muscle support and heat retention. Anti-bacterial NILIT® Bodyfresh treatment prevents odour when wearing the trousers over extended periods.

#### Features

- NILIT® BodyFresh prevents bacteria growth to eliminate odour and keep you fresh
- Variable knits and weaves, including a 3D protective knit, strategically placed to support and protect muscles, organs and joints
- A mesh knit in high heat areas for ventilation and honeycomb thermal knit for heat retention on key areas
- High wicking fabric technology draws moisture away from the skin to regulate body temperature for comfort

#### Composition:

56% Polyamide, 40% Polypropylene, 4% Elastane

#### Sizes:

XS/S, M/L, XL/2XL

## WOMEN'S ACTIVE BASE LAYER TROUSERS 80913

**MUSTO**



991  
Black

**HIGH WICKING**    **NILIT® BODYFRESH**

### WOMEN'S ACTIVE BASE LAYER TROUSERS

With their seamless construction, these Women's Active Base Layer Trousers offer ultimate comfort beneath layers. They wick away moisture from your body and regulate your temperature. Different knits and weaves have been strategically placed for exceptional muscle support and heat retention. Anti-bacterial NILIT® Bodyfresh treatment prevents odour when wearing the trousers over extended periods.

#### Features

- NILIT® BodyFresh prevents bacteria growth to eliminate odour and keep you fresh
- Variable knits and weaves, including a 3D protective knit, strategically placed to support and protect muscles, organs and joints
- A mesh knit in high heat areas for ventilation and honeycomb thermal knit for heat retention on key areas
- High wicking fabric technology draws moisture away from the skin to regulate body temperature for comfort

**Composition:** 56% Polyamide, 40% Polypropylene, 4% Elastane

**Sizes:** 8/10, 12/14, 16/18



## CHAMPIONSHIP SMOCK 80818



841  
Platinum



991  
Black



### CHAMPIONSHIP SMOCK

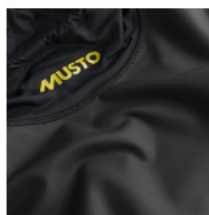
Made for racing, made to go the distance. Championship Smock features a resilient 3-layer waterproof fabric construction. For the freedom of movement you need to compete at your best, the garment has been made using 4-way stretch fabric and ergonomic seaming. The elasticated hem, prevented from riding up by the silicon gripper, gives you a comfort fit that moves with you. A small side pocket provides space for essentials with reflective detail to keep you visible on the water.

#### Features

- Hook and loop adjustable, soft dan elastic collar and cuffs for a comfortable but secure seal
- Silicon gripper inside the hem prevents it from riding up
- Bonded closure tabs for durability and ease of use with gloves
- Bonded, elasticated hem with no exposed stitching for a snug fit and added durability
- Zipped side pocket to keep essentials secure
- Reflective details keep you visible in low light
- Zip neck with a gusset to prevent spray entering when zip is open for ventilation
- No underarm or side seams for maximum comfort and movement

# CHAMPIONSHIP FLEECE AQUA LS TOP 80895

**MUSTO**



991  
Black

**DWR**



## CHAMPIONSHIP FLEECE AQUA LS TOP

Designed to be warm and water repellent, the Championship Fleece Aqua Top is engineered in a 4-way stretch fabric for maximum freedom of movement as you race. Keep supremely warm with this extra layer, whether wet or dry, to maximise your time on the water. Engineered flatlock seams prevent chafing and the adjustable collar gives you a closer fit. High grade silicon gripper tape at the hem prevents the top from riding up as you move.

### Features

- Articulated underarms allow greater freedom of movement
- Drawcord funnel neck collar with flat cord adjuster to keep in warmth
- 3-layer, 4-way stretch fleece fabric and a durable water repellent coating (DWR)

### Composition:

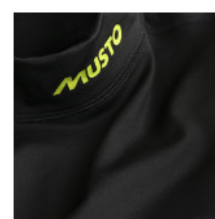
67% Nylon, 28% Polyurethane (PU), 5% Elastane  
Features Polyurethane coating

### Sizes:

XS, S, M, L, XL, 2XL

# CHAMPIONSHIP HYDROTHERM LS TOP 80896

**MUSTO**



991  
Black

**DWR**

## CHAMPIONSHIP HYDROTHERM LS TOP

The Championship Hydrothermal Top: superior warmth, water repellency and incredible versatility. The stretch fabric and ergonomic seams provide the exceptional freedom of movement you need for active dinghy sailing. Wear this sailing top as a base layer or alone on dry days.

### Features

- No underarm seams for complete comfort
- Hydrophobic, warm fleece coated in durable water repellent (DWR) repels water and keeps you warm
- Durable Water Repellent (DWR) coating to help water bead and run off for faster drying times

### Composition:

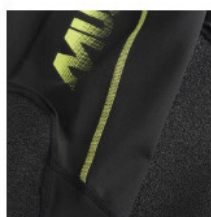
90% Polyamide, 10% Elastane  
Features Polyurethane coating

### Sizes:

2XS, XS, S, M, L, XL, 2XL

# CHAMPIONSHIP HYDROTHERM PANT 80848

**MUSTO**



991  
Black

**DWR**

## CHAMPIONSHIP HYDROTHERM PANT

The Championship ThermoFLEX Pant: made for the dinghy sailor from water repellent fleece fabric for superior warmth and comfort. An advanced stretch construction ensures freedom of movement. A streamlined fit ensures that these can be worn as a base layer under your wetsuit, drysuit or shorts for some added warmth during cold days on the water.

### Features

- Hydrophobic, warm fleece coated in durable water repellent (DWR) repels water and keeps you warm
- Contoured, flatlocked seams are barely detectable against your skin for comfort
- Anti-abrasion nylon faced neoprene on the knees for durability
- Silicon gripper inside the ankles prevent the legs from riding up
- Crotch gusset for comfort and ease of movement
- Durable Water Repellent (DWR) coating to help water bead and run off for faster drying times

### Composition:

90% Polyamide, 10% Elastane  
Features Polyurethane coating

### Sizes:

XS, S, M, L, XL, 2XL



## CHAMPIONSHIP DECK SHIELD SHORT 80835

**MUSTO**

991  
Black

**50**

### CHAMPIONSHIP DECK SHIELD SHORT

Pull on the Championship Deck Shield Shorts, with added protection on the seat so you can stay on the water for longer. Ultra-resilient and exceptionally comfortable, these shorts feature 3mm neoprene padding in the seat and back of the thighs on the 1.5mm abrasion resistant nylon. Stretchy, UPF 50 treated fabric will protect you from the sun while providing unrestricted movement.

#### Features

- Shaped waistband with a high back waist for added coverage when active
- Ultraviolet Protection Factor (UPF) of 50 to shield you in strong sun exposure
- Silicon gripper inside the leg hems and waistband keeps it in place as you move
- Anti-abrasion nylon faced neoprene on the seat and back of the thighs for durability

#### Composition:

Shell: 86% Polyamide, 14% Elastane  
Trim: 80% Neoprene, 20% Polyamide

#### Sizes:

XS, S, M, L, XL, 2XL

## CHAMPIONSHIP DECK SHIELD PANT 80849

**MUSTO**



991  
Black

**50**  
UPF50

### CHAMPIONSHIP DECK SHIELD PANT

These Championship Deck Shield Pants feature 3mm neoprene padding in the seat and back of the thighs for durable protection. Abrasion resistant nylon, provides impeccable comfort for a day on the water. Protect your knees from the hard deck too with the moulded rubber DeckShield knee protection. Stretch fabric with a UPF50 treatment safeguards you from the while providing unrestricted movement.

#### Features

- 3mm neoprene padding on the seat for comfort when sailing and hiking out
- Ultraviolet Protection Factor (UPF) of 50 to shield you in strong sun exposure
- Reinforced knees and seat for added durability and abrasion resistance
- Anti-abrasion nylon faced neoprene on the seat and back of the thighs for durability
- Contoured, flatlocked seams are barely detectable against your skin for comfort
- Silicon gripper inside the ankles and waistband keeps it in place as you move

#### Composition:

Shell: 86% Polyamide, 14% Elastane  
Trim: 80% Neoprene, 20% Polyamide

#### Sizes:

XS, S, M, L, XL, 2XL

## FOIL DECK SHIELD HIKERS 80834

**MUSTO**



979  
Dark Grey/Black

## FOIL DECK SHIELD HIKERS

**Sizes:** XS, S, M, L, XL, 2XL

# INSIGNIA UV FAST DRY LONG SLEEVE T-SHIRT 80901

**MUSTO**



002  
White



560  
Brilliant Blue



991  
Black

**40**

UPF40

## INSIGNIA UV FAST DRY LONG SLEEVE T-SHIRT

The Insignia UV Fast Dry Long Sleeve T-Shirt has been constructed from an advanced moisture-wicking fabric to keep you comfortably cool at all times. An engineered anti-bacterial finish keeps you fresh with UPF 40 sun protection to keep you safely on the water for longer. Flatlocked seams lie flat against your skin for greater comfort.

### Features

- Silver anti-bacterial finish to prevent odour
- Breathable, wicking and fast drying fabric to keep you cool and dry
- No underarm seams for complete comfort
- Flatlocked seams are barely detectable against your skin for comfort
- Ultraviolet Protection Factor (UPF) of 40 to shield you in extended, moderate sun exposure

**Composition:** 92% Polyamide, 8% Elastane

**Sizes:** XS, S, M, L, XL, 2XL

# INSIGNIA UV FAST DRY SHORT SLEEVE T-SHIRT 80900

**MUSTO**



560  
Brilliant Blue



002  
White



991  
Black

**40**

UPF40

## INSIGNIA UV FAST DRY SHORT SLEEVE T-SHIRT

This Insignia UV Fast Dry Short Sleeve T-Shirt features a stretch fabric construction to ensure superior freedom of movement. The absence of underarm seams enhance comfort by eliminating chaffing when active. Constructed with UPF 40 protection to safeguard you from the sun's harmful UV rays.

### Features

- Ultraviolet Protection Factor (UPF) of 40 to shield you in extended, moderate sun exposure
- No underarm seams for complete comfort
- Stretch fabric for maximum freedom of movement

**Composition:** 92% Polyamide, 8% Elastane

**Sizes:** XS, S, M, L, XL, 2XL



## SUNBLOCK LONG SLEEVE RASH GUARD 80897

**MUSTO**



352  
Sulphur Spring



002  
White



991  
Black

**50**  
UPF50+

### SUNBLOCK LONG SLEEVE RASH GUARD

Protect your skin from sun exposure on the water in the Sunblock Long Sleeve Rash Guard. Advanced UPF50 treated fabric allows you to sail for longer while ergonomic, flatlocked seams are strategically positioned for maximum comfort and freedom of movement.

#### Features

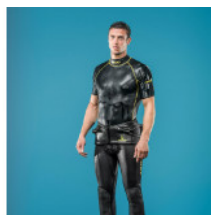
- Ultraviolet Protection Factor (UPF) of 50 to shield you in strong sun exposure
- No underarm seams for complete comfort

**Composition:** 91% Polyamide, 9% Elastane

**Sizes:** XS, S, M, L, XL, 2XL

# SUNBLOCK SHORT SLEEVE RASH GUARD 80898

**MUSTO**



002  
White



991  
Black

**50**  
UPF

## SUNBLOCK SHORT SLEEVE RASH GUARD

Protect your skin from sun exposure on the water in the Sunblock Short Sleeve Rash Guard. Advanced UPF50 treated fabric allows you to sail for longer while ergonomic, flatlocked seams are strategically positioned for maximum comfort and freedom of movement.

### Features

- Ultraviolet Protection Factor (UPF) of 50 to shield you in strong sun exposure
- No underarm seams for complete comfort
- Flatlocked seams are barely detectable against your skin for comfort

**Composition:** 91% Polyamide, 9% Elastane

**Sizes:** XS, S, M, L, XL, 2XL

# FOILING RACE BIB 80861

**MUSTO**



002  
White



991  
Black

**40**

UPPFORTY

## FOILING RACE BIB

Pull on your Foiling Race Bib over your buoyancy aid when racing. The stretch fabric provides a streamlined fit and UPF40 protection from the sun. Elasticated armholes and silicon gripper inside the hem give you a comfort fit that won't ride up for unrestricted racing. The bib has space for your team or boat's branding too.

### Features

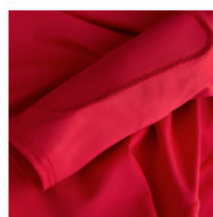
- Elasticated armholes for a flexible fit
- Small Musto branding allowing space for personalisation
- Silicon gripper inside the hem prevents it from riding up
- Ultraviolet Protection Factor (UPF) of 40 to shield you in extended, moderate sun exposure

**Composition:** 92% Polyamide, 8% Elastane

**Sizes:** XS, S, M, L, XL, 2XL

# FOILING SUNBLOCK IMPACT TOP 80864

**MUSTO**



536  
Race Blue

002  
White

D3O®  
\*\*\*\*\*

50  
UPF

## FOILING SUNBLOCK IMPACT TOP

This super lightweight Foiling Sunblock Impact Top is designed for protection when sailing high-speed foiling boats. Internal pockets allow for cutting-edge D3O® impact protection pads to be placed on the shoulders, elbows and forearms. Highly flexible D3O® pads work by moving with your body and hardening on impact, absorbing the shock through molecules that lock together. The fabric also offers advanced UPF50 sun protection and is fast-drying for comfort. Wear alone or layered under your wetsuit or smock.

### Features

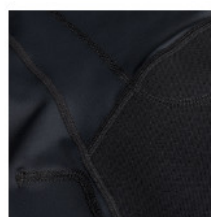
- No underarm seams for complete comfort
- Turtleneck collar
- Pockets to allow for D3O® impact protection pads at the shoulders, elbows and forearms
- Ultraviolet Protection Factor (UPF) of 50 to shield you in strong sun exposure
- Raglan sleeves allow greater freedom of movement

**Composition:** 86% Neoprene, 14% Polyamide

**Sizes:** XS, S, M, L, XL, 2XL

# FOILING SUNBLOCK IMPACT LONG JOHN 80852

**MUSTO**



991  
Black

D3O® **50**  
UPF 50

## FOILING SUNBLOCK IMPACT LONG JOHN

The Foiling Sunblock Impact Long John is fast-drying and super lightweight for superior comfort and agility. Abrasion resistant neoprene on the knees, shin and seat enhance durability. Internal pockets allow for D3O® impact protection pads in the back, hip, outer thigh, knees and shins. These flexible pads harden on impact, ensuring cutting edge protection when foiling. A UPF50 fabric treatment shields you from the sun. Team the Impact Long John with the Foiling Sunblock Impact Top to complete your protection.

### Features

- Anti-abrasion nylon faced neoprene on the seat, back of the thighs and shins for durability
- Pockets to allow for D3O® impact protection pads at the back, hips, outer thighs, shins and knees
- 1 knife pocket allows for a rope knife

**Composition:** 86% Polyamide, 14% Elastane  
UPF 50

**Sizes:** XS, S, M, L, XL, 2XL



## CHAMPIONSHIP BUOYANCY AID 80886

**MUSTO**



991  
Black

**YKK®**

### CHAMPIONSHIP BUOYANCY AID

Ergonomically designed in a short length for unrestricted movement, the Championship Buoyancy Aid is made for the dinghy racer. Zipped at the side and belted at the waist, the fit is secure. Reflective print means you can be seen even in low light and the front pocket enables you to keep essentials close to hand and out of the way. This is engineered for your safety whilst maintaining your performance.

#### Features

- Reflective details keep you visible in low light
- EPE layered foam construction in an ergonomic design for buoyancy
- Tough, adjustable webbing belt with a clip buckle for a secure fit
- 50 Newtons (5kg/11lbs) of buoyancy; 860g weight
- YKK® VISLON® zippered front pocket with bellows for added storage room
- YKK® VISLON® zip side for easy entry and a secure fastening
- Elasticated hem and shoulder straps for a snug fit and manoeuvrability
- Crotch strap on junior sizes for a secure fit (sizes: JS / JM)
- Meets European ISO 12402 standards for personal protective equipment safety

# REGATTA BUOYANCY AID 86000

**MUSTO**



844  
Carbon

## REGATTA BUOYANCY AID

### Features

- ISO 12402-5 certified buoyancy aid – performance level 50
- Soft foam in the front for comfort
- PE foam in the back for stability
- Front pocket
- Side zipper for easy donning

### Composition:

Shell: 100% Polyester  
Filling: 100% PVC Foam

### Sizes:

2XS, XS, S, M, L, XL

## YOUTH CHAMPIONSHIP SMOCK 80791



991  
Black

### YOUTH CHAMPIONSHIP SMOCK

This super-stretch, waterproof Youth Championship Smock gives you maximum freedom of movement and keeps you dry as you race. The smock offers an enhanced level of comfort: adjust the cuffs and neck to keep the water out, or unzip the neck to add ventilation. A resilient, elasticated hem stays in place using the internal silicon gripper print. Technical, reflective details around the zip keep you visible on the water in low light.

#### Features

- Zip neck with a gusset to prevent spray entering when zip is open for ventilation
- Hook and loop adjustable, soft and elastic collar and cuffs for a comfortable but secure seal
- Silicon gripper inside the hem prevents it from riding up
- Bonded closure tabs for durability and ease of use with gloves
- Reflective details keep you visible in low light
- Zipped side pocket to keep essentials secure

## YOUTH CHAMPIONSHIP THERMOHOT TOP 80801

**MUSTO**



991  
Black

**THERMOHOT**

### YOUTH CHAMPIONSHIP THERMOHOT TOP

Stay incredibly warm when cold weather dinghy sailing in the Youth Championship ThermoHOT Neoprene Top, featuring a loop thermospan backer. Super-stretch 4mm neoprene (5mm insulation when including the neoprene backer and face thickness) combines complete freedom of movement with an exceptional level of warmth. The glideskin neck provides comfort as you move. Ergonomic, flatlocked seams enhance comfort when active while being strategically placed to avoid all stress points.

#### Features

- Glideskin neoprene at the neck allows easy donning and removal and adds comfort
- Scooped back hem for added coverage when active
- Laser cut cuffs for a comfortable, seamless cuff
- Seams are ergonomically placed to not cross any stress points for maximum freedom of movement and durability
- Ergonomic construction for a close fit and minimal bulk
- Striking sulphur spring colour on the inside so it looks great even when drying inside-out
- Glued, flat stitched and internally taped seams create a watertight seal and increase durability

**Composition:** 80% Neoprene, 20% Polyamide

**Sizes:** JM, JL

## YOUTH CHAMPIONSHIP THERMOCOOL TOP 80796

**MUSTO**



991  
Black

**THERMOCOOL**

### YOUTH CHAMPIONSHIP THERMOCOOL TOP

Constructed from super-stretch neoprene for full freedom of movement with strategically placed seams for enhanced durability and warmth in colder waters. This 1.5mm Youth Championship Neoprene Top features a neoprene backer and face, increasing thickness to 2.5mm for total durability and comfort. A scooped hem offers heightened coverage when active. A glideskin neck and laser cut cuffs provide a comfort fit.

#### Features

- Glideskin neoprene at the neck allows easy donning and removal and adds comfort
- 1.5mm super stretch neoprene for maximum freedom of movement and a streamlined fit
- Laser cut cuffs for a comfortable, seamless cuff
- Seams are ergonomically placed to not cross any stress points for maximum freedom of movement and durability
- Scooped back hem for added coverage when active
- Flatlocked seams are barely detectable against your skin for comfort
- Ergonomic construction for a close fit and minimal bulk
- Striking sulphur spring colour on the inside so it looks great even when drying inside-out



## YOUTH CHAMPIONSHIP DECK SHIELD HIKERS 80793

**MUSTO**



979

Dark Grey/Black

### YOUTH CHAMPIONSHIP DECK SHIELD HIKERS

The 1.5mm super stretch neoprene of these Youth Championship Deck Shield Hikers provide superior freedom of movement. Including the neoprene backer and face thickness, the garment offers 2.5mm thickness for remarkable durability and comfort. Highly engineered, ergonomic baton pads supply outstanding impact protection: position them exactly where you need them within the garment.

#### Features

- 1.5mm super stretch neoprene for maximum freedom of movement and a streamlined fit
- Lined with loop back for comfort
- Anti-abrasion nylon faced neoprene on the seat and back of the thighs for durability
- Pockets for inserting baton pads
- Two detachable baton pads with three embedded batons each can be positioned with Velcro where needed for hiking protection and support
- Neoprene waist adjuster with Velcro for a secure fit
- Silicon gripper inside the leg hems to prevent them from riding up

**Composition:** 80% Neoprene, 20% Polyamide

**Sizes:** JM, JL

# YOUTH CHAMPIONSHIP SUNBLOCK LONG SLEEVE RASH GUARD 80798

**MUSTO**



002  
White



991  
Black



**50**  
UPF FIFTY

## YOUTH CHAMPIONSHIP SUNBLOCK LONG SLEEVE RASH GUARD

This Youth Championship Sunblock Long Sleeve Rash Guard supplies high grade UPF50 protection from the sun's harmful UV rays. Freedom of movement is offered through the fabric's 4-way stretch. The elimination of underarm seams greatly enhances comfort.

### Features

- Ultraviolet Protection Factor (UPF) of 50 to shield you in strong sun exposure
- 4-way stretch fabric for maximum freedom of movement
- Raglan sleeves allow greater freedom of movement
- Contoured, flatlocked seams are barely detectable against your skin for comfort
- No underarm seams for complete comfort

### Composition:

91% Polyamide, 9% Elastane + UPF50

### Sizes:

JM, JL

# YOUTH INSIGNIA UV FAST DRY SHORT SLEEVE T-SHIRT 80802

**MUSTO**



560  
Brilliant Blue



002  
White



991  
Black

**40**  
UPF40

## YOUTH INSIGNIA UV FAST DRY SHORT SLEEVE T-SHIRT

The Youth Insignia UV Fast Dry Rash Guard has been constructed from exceptional, moisture-wicking fabric for enhanced comfort. Anti-bacterial properties keep you fresh with UPF 40 for protection from the sun. Flatlocked seams lie flat against your skin for greater comfort as a base layer.

### Features

- Flatlocked seams are barely detectable against your skin for comfort
- No underarm seams for complete comfort
- Ultraviolet Protection Factor (UPF) of 40 to shield you in extended, moderate sun exposure

### Composition:

92% Polyamide, 8% Elastane + UPF40

### Sizes:

JM, JL

# YOUTH INSIGNIA UV FAST DRY LONG SLEEVE T-SHIRT 80803

**MUSTO**



002  
White



560  
Brilliant Blue



991  
Black

**40**  
UPF40

## YOUTH INSIGNIA UV FAST DRY LONG SLEEVE T-SHIRT

The Youth Insignia UV Fast Dry Rash Guard has been constructed from exceptional, moisture-wicking fabric for enhanced comfort. Anti-bacterial properties keep you fresh with UPF 40 for protection from the sun. Flatlocked seams lie flat against your skin for greater comfort as a base layer.

### Features

- Flatlocked seams are barely detectable against your skin for comfort
- No underarm seams for complete comfort
- Breathable, wicking and fast drying fabric to keep you cool and dry
- Ultraviolet Protection Factor (UPF) of 40 to shield you in extended, moderate sun exposure

**Composition:** 92% Polyamide, 8% Elastane + UPF40

**Sizes:** JM, JL

## CREW SOFTSHELL JACKET 80779

**MUSTO**



169  
True Red



991  
Black



560  
Brilliant Blue



598  
True Navy

**DWR**

### CREW SOFTSHELL JACKET

Make the most of the outdoors with this Crew Soft Shell Jacket. Water resistant and coated with a durable water repellent (DWR) to encourage water to bead and run off the fabric, you can enjoy the outdoors on days with light showers and changeable weather. Stripped back for streamlined performance, this breathable softshell is ideal for your summer activities. You can even keep small belongings secure in the stash pocket on the sleeve.

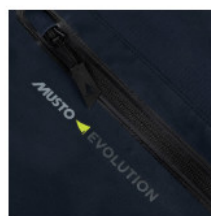
#### Features

- Two side pockets and an arm pocket with zip closures to keep items safe
- Durable Water Repellent (DWR) coating to help water bead and run off for faster drying times
- Bound hem and cuffs with stretch binding for a close fit
- Articulated sleeves for greater freedom of movement
- Fabric cover over the top of the zip for comfort under your chin
- Showerproof and breathable to keep you dry in light showers and when active
- 4-way stretch fabric for maximum freedom of movement



# CREW SOFTSHELL GILET 80780

**MUSTO**



598  
True Navy



991  
Black

**DWR**

## CREW SOFTSHELL GILET

Add a layer of weather protection when enjoying the outdoors with this Crew Soft Shell Gilet. Water resistant and coated with a durable water repellent (DWR) to encourage water to bead and run off the fabric, you can find adventure in changeable weather with light showers. Stripped back for streamlined performance, this breathable softshell is ideal for your summer activities.

### Features

- Showerproof and breathable to keep you dry in light showers and when active
- Durable Water Repellent (DWR) coating to help water bead and run off for faster drying times
- 4-way stretch fabric for maximum freedom of movement
- Bound hem and armholes with stretch binding for a close fit
- Fabric cover over the top of the zip for comfort under your chin
- 2 side pockets

### Composition:

OUTER: 100% Polyester  
LINING: 100% Polyester,  
WP: 10,000mm  
MVP: 5,000g/m<sup>2</sup>

### Sizes:

XS, S, M, L, XL, 2XL

## EVOLUTION FULL ZIP TECHNICAL SWEAT 82041

**MUSTO**



598  
True Navy



813  
Platinum Marl

### EVOLUTION FULL ZIP TECHNICAL SWEAT

#### Features

- Spacer fabric
- Clean modern styling
- Elasticated binding to hem and cuff
- Chest pocket

#### Composition:

OUTER: 69% Polyester, 27% Viscose, 4% Elastane

#### Sizes:

S, M, L, XL, 2XL

## EVOLUTION LOGO CREW SWEAT 82042

**MUSTO**



583  
Bay Blue



598  
True Navy



972  
Gunmetal Marl

### EVOLUTION LOGO CREW SWEAT

#### Features

- Embroidered Evolution branding
- Raglan back sleeve construction
- Saddle sleeve construction

#### Composition:

OUTER: 100% Cotton

#### Sizes:

S, M, L, XL, 2XL

## EVOLUTION LOGO HOODIE SWEAT 82043

**MUSTO**



598  
True Navy



583  
Bay Blue



972  
Gunmetal Marl

## EVOLUTION LOGO HOODIE SWEAT

### Features

- Embroidered Evolution branding
- Lightweight comfortable hood
- Front handwarmer pocket
- Saddle sleeve construction

### Composition:

OUTER: 100% Cotton

### Sizes:

S, M, L, XL, 2XL

## SYNERGY 1/2 ZIP MICROFLEECE 80407



991  
Black



598  
True Navy



### SYNERGY 1/2 ZIP MICROFLEECE

This Essential Evo Micro Fleece has a proprietary Arctec 160 microfiber fleece construction for impeccably light and breathable warmth. A high, zipped neck provides comfort by holding in body heat while dense, flatlocked seams increase comfort by laying imperceptibly against the skin. Ideal for use as a mid-layer.

#### Features

- Flatlocked seams are barely detectable against your skin for comfort
- Arctec 160 fleece is warm, comfortable, breathable and fast drying and does not pill
- Raised silicone print
- High neck

#### Composition:

100% Polyester, 170gm Microfleece

#### Sizes:

S, M, L, XL, 2XL



## SYNERGY FLEECE JACKET 80408

**MUSTO**



991  
Black



598  
True Navy



### SYNERGY FLEECE JACKET

#### Features

- Breathable, wicking and fast drying fabric to keep you cool and dry
- Bonded hang loop
- LYCRA® bound hem and cuffs provide a snug fit
- Flatlock stitching in key areas for enhanced comfort
- Grown on zip guard to minimise skin irritation

#### Composition:

MAIN: 100% Polyester

#### Sizes:

S, M, L, XL, 2XL

# EVOLUTION SUNBLOCK LONG SLEEVE POLO 2.0

## 81147

**MUSTO**



583  
Bay Blue



598  
True Navy



002  
White

### Tutti i prodotti

**50**

UPF50+  
UPF50+

### Alcuni prodotti

**NEW COLOUR**

### EVOLUTION SUNBLOCK LONG SLEEVE POLO 2.0

#### Features

- Ultraviolet Protection Factor (UPF) of 50 to shield you in strong sun exposure
- Flatlocked seams are barely detectable against your skin for comfort
- Ribbed collar

#### Composition:

OUTER: 91% Polyester, 9% Elastane

#### Sizes:

S, M, L, XL, 2XL

# EVOLUTION SUNBLOCK SHORT SLEEVE POLO 2.0

## 81148

**MUSTO**



841  
Platinum



583  
Bay Blue



598  
True Navy



002  
White



973  
Gunmetal Marl

### Tutti i prodotti

**50**

UPF FIFTY

### Alcuni prodotti

**NEW COLOUR**

### EVOLUTION SUNBLOCK SHORT SLEEVE POLO 2.0

#### Features

- Ultraviolet Protection Factor (UPF) of 50 to shield you in strong sun exposure
- Ribbed collar
- Flatlocked seams are barely detectable against your skin for comfort

#### Composition:

OUTER: 91% Polyester, 9% Elastane

#### Sizes:

S, M, L, XL, 2XL

# EVOLUTION SUNBLOCK LONG SLEEVE T-SHIRT 2.0

## 81155

**MUSTO**



002  
White



598  
True Navy



841  
Platinum



583  
Bay Blue Marl

### Tutti i prodotti

**50**

UPF50+  
UPF50+

### Alcuni prodotti

**NEW COLOUR**

### EVOLUTION SUNBLOCK LONG SLEEVE T-SHIRT 2.0

#### Features

- Fast drying fabric to keep you comfortable
- Ultraviolet Protection Factor (UPF) of 50 to shield you in extended, moderate sun exposure
- Flatlocked seams are barely detectable against your skin for comfort
- Crew neck shape

#### Composition:

OUTER: 91% Polyester, 9% Elastane

#### Sizes:

XS, S, M, L, XL, 2XL

# EVOLUTION SUNBLOCK SHORT SLEEVE T-SHIRT 2.0 81154

**MUSTO**



002  
White



598  
True Navy



841  
Platinum



972  
Gunmetal Marl



583  
Bay Blue Marl

## Tutti i prodotti

**50**  
UPPFIFTY

## Alcuni prodotti

**NEW COLOUR**

## EVOLUTION SUNBLOCK SHORT SLEEVE T-SHIRT 2.0

### Features

- Fast drying fabric to keep you comfortable
- Ultraviolet Protection Factor (UPF) of 50 to shield you in strong sun exposure
- Flatlocked seams are barely detectable against your skin for comfort
- Crew neck shape

### Composition:

OUTER: 91% Polyester, 9% Elastane

### Sizes:

XS, S, M, L, XL, 2XL



## EVOLUTION PERFORMANCE TROUSERS 2.0 82002

**MUSTO**



598  
True Navy



991  
Black



813  
Platinum

schoeller  
Switzerland

**40**  
UPPFORTY

### EVOLUTION PERFORMANCE TROUSERS 2.0

These are hard-wearing performance sailing trousers. Developed in a lightweight fast dry stretch fabric, the trousers offer full freedom of movement and comfort. Schoeller®-keprotec® reinforcement on the seat, knees and back hem give these trousers hard wearing durability. Back and thigh pockets keep your possessions close and secure. Keep performing with Evolution Performance Trousers.

#### Features

- Ultraviolet Protection Factor (UPF) of 40 to shield you in extended, moderate sun exposure
- Schoeller®-keprotec® reinforced patches incorporating Kevlar® on the seat and knees for durability
- Zip fly and button closure
- Two side pockets, a water-resistant, zipped pocket behind the hook & loop fastened thigh pocket plus a welted back pocket
- Crotch gusset for comfort and ease of movement
- Adjustable waistband for a secure and comfortable fit
- Shaped waistband with a high back waist for added coverage when active
- Fast drying stretch fabric for freedom of movement and active wear

# EVOLUTION DECK FAST DRY UV TROUSERS 81151

**MUSTO**



812  
Light Stone



598  
True Navy



991  
Black

**40**

UPF40

## EVOLUTION DECK FAST DRY UV TROUSERS

### Features

- Fast drying stretch fabric for freedom of movement and active wear
- Ultraviolet Protection Factor (UPF) of 40 to shield you in extended, moderate sun exposure
- 2 side pockets, 2 cargo pockets and 2 rear pockets
- Belt loops including a double belt loop for added durability for attaching items
- Zip fly and button closure
- Shaped waistband with a high back waist for added coverage when active
- Crotch gusset for comfort and ease of movement

### Composition:

OUTER: 96% Polyamide, 4% Elastane

### Sizes:

30, 32, 34, 36, 38, 40

## EVOLUTION PERFORMANCE SHORT 2.0

### 82001

**MUSTO**



841  
Platinum



991  
Black



598  
True Navy



812  
Light Stone

schoeller  
switzerland

**40**  
UPF

## EVOLUTION PERFORMANCE SHORT 2.0

These are hard-wearing performance sailing shorts. The lightweight, fast dry stretch fabric gives full freedom of movement and comfort. Schoeller®-keprotec® reinforcement on the seat provides hard-wearing durability. Back and thigh pockets keep your possessions close and secure.

### Features

- Ultraviolet Protection Factor (UPF) of 40 to shield you in extended, moderate sun exposure
- Zip fly and button closure
- Two side pockets, a water-resistant, zipped pocket behind the hook & loop fastened thigh pocket plus a welted back pocket
- Crotch gusset for comfort and ease of movement
- Adjustable waistband for a secure and comfortable fit
- Shaped waistband with a high back waist for added coverage when active
- Fast drying stretch fabric for freedom of movement and active wear
- Schoeller®-keprotec® reinforced patches incorporating Kevlar® on the seat for durability

## EVOLUTION DECK UV FAST DRY SHORT 82000

**MUSTO**



965  
Charcoal



991  
Black



812  
Light Stone



598  
True Navy

**40**

UPF 40

### EVOLUTION DECK UV FAST DRY SHORT

Enjoy the getting out on the water in these Deck UV Fast Dry Shorts. The fast dry fabric keeps you dry and the stretch in the fabric adds comfort. The UPF 40 protects you from the sun too. Four Velcro secured pockets give plenty of storage and the double belt loops on the right side are durable for attaching a multi-tool pouch. You get added coverage from the waistband that is higher at the back.

#### Features

- Ultraviolet Protection Factor (UPF) of 40 to shield you in extended, moderate sun exposure
- 2 side pockets, 2 cargo pockets and 2 rear pockets
- Belt loops including a double belt loop for added durability for attaching items
- Zip fly and button closure
- Shaped waistband with a high back waist for added coverage when active
- Fast drying stretch fabric for freedom of movement and active wear
- Crotch gusset for comfort and ease of movement

#### Composition:

OUTER: 96% Polyamide, 4% Elastane

#### Sizes:

26, 28, 30, 32, 34, 36, 38, 40

## RIB UV FAST DRY SHORT 80438

**MUSTO**



812  
Light Stone



991  
Black



965  
Charcoal



598  
True Navy

**40**  
UPF40

### RIB UV FAST DRY SHORT

These smart RIB UV Fast Dry Shorts look like a smart pair of shorts, but they conceal technical features. The fabric is fast drying to keep you comfortable and it shields you from the sun with UPF 40. A double belt loop allows you to securely attach a multi-tool pouch or camera case for when you are out and active.

#### Features

- Ultraviolet Protection Factor (UPF) of 40 to shield you in extended, moderate sun exposure
- Fast drying stretch fabric for freedom of movement and active wear
- Two side pockets and a coin pocket and two rear patch pockets
- Belt loops including a double belt loop for added durability for attaching items
- Zip fly and button closure

#### Composition:

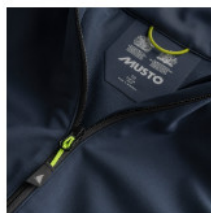
OUTER: 96% Polyamide, 4% Elastane

#### Sizes:

30, 32, 34, 36, 38, 40



## WOMEN'S CREW SOFTSHELL JACKET 80472



598  
True Navy



991  
Black



### WOMEN'S CREW SOFTSHELL JACKET

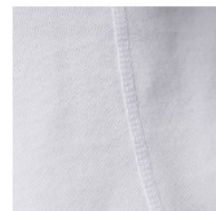
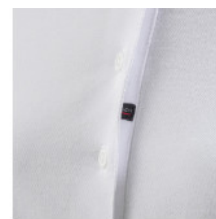
When you need breathable weather protection in light showers and cooler temperatures this summer, wear the Women's Crew Softshell Jacket. It is showerproof, breathable and the ergonomic fit and articulated sleeves allow you to move freely so you can enjoy the outdoors. Handy zipped pockets and a stash pocket on the arm give you plenty of storage for small essentials. Available in a range of colours, there's a Crew Softshell for you.

#### Features

- Two side pockets and an arm pocket with zip closures to keep items safe
- Durable Water Repellent (DWR) coating to help water bead and run off for faster drying times
- Bound hem and cuffs with stretch binding for a close fit
- Showerproof and breathable to keep you dry in light showers and when active
- 4-way stretch fabric for maximum freedom of movement
- Articulated sleeves for greater freedom of movement
- Fabric cover over the top of the zip for comfort under your chin

# WOMEN'S EVOLUTION SUNBLOCK SHORT SLEEVE POLO 2.0 81156

**MUSTO**



002  
White



598  
True Navy



617  
Blue Curacao

**50**  
UPF FIFTY

## WOMEN'S EVOLUTION SUNBLOCK SHORT SLEEVE POLO 2.0

### Features

- 4 button placket
- Ultraviolet Protection Factor (UPF) of 50 to shield you in extended, moderate sun exposure
- Flatlocked seams are barely detectable against your skin for comfort
- Ribbed collar

### Composition:

OUTER: 91% Polyester, 9% Elastane

### Sizes:

8, 10, 12, 14, 16, 18

# WOMEN'S EVOLUTION SUNBLOCK LONG SLEEVE TEE 2.0 81162

**MUSTO**



002  
White



617  
Blue Curacao

**50**  
UPF FIFTY

## WOMEN'S EVOLUTION SUNBLOCK LONG SLEEVE TEE 2.0

### Features

- 4 button placket
- Ultraviolet Protection Factor (UPF) of 50 to shield you in strong sun exposure
- Flatlocked seams are barely detectable against your skin for comfort
- Ribbed collar

### Composition:

OUTER: 91% Polyester, 9% Elastane

### Sizes:

8, 10, 12, 14, 16, 18

# WOMEN'S EVOLUTION SUNBLOCK SHORT SLEEVE T-SHIRT 2.0 81161

**MUSTO**



002  
White



617  
Blue Curacao



598  
True Navy

**50**  
UPF FIFTY

## WOMEN'S EVOLUTION SUNBLOCK SHORT SLEEVE T-SHIRT 2.0

### Features

- Fast drying fabric to keep you comfortable
- Ultraviolet Protection Factor (UPF) of 50 to shield you in extended, moderate sun exposure
- Flatlocked seams are barely detectable against your skin for comfort

### Composition:

OUTER: 91% Polyester, 9% Elastane

### Sizes:

8, 10, 12, 14, 16, 18

# WOMEN'S EVOLUTION PERFORMANCE TROUSERS

## 2.0

### 82005

**MUSTO**



598  
True Navy



991  
Black

schoeller  
switzerland

**40**  
UPPERFORTY

## WOMEN'S EVOLUTION PERFORMANCE TROUSERS 2.0

These are hard-wearing women's sailing trousers developed in a lightweight, fast dry stretch fabric for full freedom of movement and comfort. Schoeller®-keprotec® reinforcement on the seat, knees and back hem give these trousers durability. Back and thigh pockets keep your possessions close and secure.

### Features

- Schoeller®-keprotec® reinforced patches incorporating Kevlar® on the seat and knees for durability
- Zip fly and button closure
- Flattering female cut
- Two side pockets, a water-resistant, zipped pocket behind the hook & loop fastened thigh pocket plus a welted back pocket
- Adjustable waistband for a secure and comfortable fit
- Shaped waistband with a high back waist for added coverage when active
- Fast drying stretch fabric for freedom of movement and active wear



## WOMEN'S EVOLUTION PERFORMANCE SHORT 2.0 82003

**MUSTO**



841  
Platinum



991  
Black



598  
True Navy

schoeller  
switzerland

**40**  
UPF

### WOMEN'S EVOLUTION PERFORMANCE SHORT 2.0

These are hard-wearing performance sailing shorts. The lightweight, fast dry stretch fabric gives full freedom of movement and comfort. Schoeller®-keprotec® reinforcement on the seat provides hard-wearing durability. Back and thigh pockets keep your possessions close and secure.

#### Features

- Ultraviolet Protection Factor (UPF) of 40 to shield you in extended, moderate sun exposure
- Zip fly and button closure
- Flattering female cut
- Two side pockets, a water-resistant, zipped pocket behind the hook & loop fastened thigh pocket plus a welted back pocket
- Crotch gusset for comfort and ease of movement
- Adjustable waistband for a secure and comfortable fit
- Shaped waistband with a high back waist for added coverage when active
- Fast drying stretch fabric for freedom of movement and active wear
- Schoeller®-keprotec® reinforced patches incorporating Kevlar® on the seat for durability

## WOMEN'S EVOLUTION DECK UV FAST DRY SHORT 82004

**MUSTO**



812  
Light Stone

598  
True Navy

991  
Black

**40**  
UPF40

### WOMEN'S EVOLUTION DECK UV FAST DRY SHORT

These Womens Deck UV Fast Dry Shorts are made for enjoying summer out on the water. The fast dry fabric keeps you dry and the stretch in the fabric adds comfort. The UPF 40 protects you from the sun too. Four Velcro secured pockets give plenty of storage and the double belt loops on the right side are durable for attaching a multi-tool pouch. You get added coverage from the waistband that is higher at the back.

#### Features

- Ultraviolet Protection Factor (UPF) of 40 to shield you in extended, moderate sun exposure
- 2 side pockets, 2 cargo pockets and 2 rear pockets
- Belt loops including a double belt loop for added durability for attaching items
- Zip fly and button closure
- Shaped waistband with a high back waist for added coverage when active
- Fast drying stretch fabric for freedom of movement and active wear
- Crotch gusset for comfort and ease of movement

#### Composition:

OUTER: 96% Polyamide, 4% Elastane

#### Sizes:

6, 8, 10, 12, 14, 16, 18

## WOMEN'S EVOLUTION UV FAST DRY SKORT 80772

**MUSTO**



598  
True Navy

841  
Platinum

812  
Light Stone

**40**  
UPF40

### WOMEN'S EVOLUTION UV FAST DRY SKORT

This is the ultimate smart working skort with built in shorts for support and coverage when you are active. Constructed using a fast dry fabric, the skort has a significantly reduced drying time, ideal for out on the water or playing sport. The wrap around front is secured with buttons and a discreet coin pocket enables you to keep small items on your person. Look smart on deck and onshore in the Evolution Skort.

#### Features

- Breathable, wicking and fast drying fabric to keep you cool and dry
- Built in shorts for active wear
- Wrap around front fastened with a button closure
- Ultraviolet Protection Factor (UPF) of 40 to shield you in extended, moderate sun exposure
- Small, jetted coin pocket

#### Composition:

OUTER: 96% Polyamide, 4% Elastane

#### Sizes:

8, 10, 12, 14, 16, 18

## WOMEN'S RIB UV FAST DRY SHORT 80491

**MUSTO**



598  
True Navy

**40**  
UPF40

### WOMEN'S RIB UV FAST DRY SHORT

These Women's RIB UV Fast Dry Shorts are a summer essential. They wick away perspiration and dry rapidly to keep you cool and comfortable. The fabric stretches a little so you get a comfortable fit. Also, their UV protection for when you are in the sun is a must-have. Wear these for technical performance in a smart style.

#### Features

- Zip fly and button closure
- A fast wicking treatment enhances moisture management to keep you dry and comfortable
- Two side pockets and a coin pocket and two rear patch pockets
- Belt loops including a double belt loop for added durability for attaching items
- Fast drying stretch fabric for freedom of movement and active wear
- Ultraviolet Protection Factor (UPF) of 40 to shield you in extended, moderate sun exposure

#### Composition:

OUTER: 96% Polyamide, 4% Elastane

#### Sizes:

8, 10, 12, 14, 16, 18

## SARDINIA JACKET 2.0

### 82006



965  
Charcoal



991  
Black



560  
Brilliant Blue



841  
Platinum



169  
True Red



598  
True Navy



### SARDINIA JACKET 2.0

Sail warm seas in the lightweight, breathable Sardinia BR1 Jacket. Ideal for warm climates, the Sardinia is waterproof, windproof and mesh lined for incredibly lightweight comfort against your base layer. Zipped side and chest pockets and an internal pocket with a headphones exit point keep your possessions and music close to hand. Cut in a smart, understated style for enhanced versatility.

#### Features

- 2-layer showerproof and breathable fabric to Musto's stringent BR1 standard, for persistent downpours
- Detachable and adjustable hood with a stiffened peak to keep run-off water away from your face
- YKK® VISLON® front zip with an internal, roll-over zip guard for added weather protection
- Two zipped side pockets and zipped chest pocket
- Internal pocket with a headphone exit point
- Scooped back hem for added coverage and a hem adjuster to keep the weather out
- Mesh lined for comfort against your skin and improved air circulation
- Hook and loop adjustable cuffs with a durable rubber cuff tab



## SARDINIA GILET 2.0

### 82007

**MUSTO**



169  
True Red



598  
True Navy



991  
Black



**DWR**



**YKK®**

### SARDINIA GILET 2.0

The Sardinia BR1 Gilet: a superior lightweight, mid-layer designed for warmer environments. Remarkably waterproof and breathable, the garment is secured by a hardwearing YKK® front zip with an internal, roll-over zip guard for enhanced weather protection. A drawcord hem and ventilating mesh lining supplies superior thermoregulated comfort.

#### Features

- 2-layer showerproof and breathable fabric to Musto's stringent BR1 standard, for persistent downpours
- YKK® front zip with an internal, roll-over zip guard for added weather protection
- Bonded, elasticated hem with no exposed stitching for a snug fit and added durability
- Two zipped side pockets and zipped chest pocket
- Mesh lined for comfort against your skin and improved air circulation



## SARDINIA 1/2 ZIP 82018

**MUSTO**



563  
Olympian Blue



597  
Navy II



162  
Red II

**YKK®**

### SARDINIA 1/2 ZIP

#### Features

- X-Cool quick dry fabric
- Technical double knit polyester jersey
- No side seam for extra comfort
- Raglan sleeve for freedom of movement
- High collar with YKK® zip
- Subtle Musto branding to collar and sleeve
- Contrast colour to top of collar

#### Composition:

OUTER: 100% Polyester

#### Sizes:

S, M, L, XL, 2XL

# ESSENTIAL FULL ZIP SWEAT 82136

**MUSTO**



597  
Navy  
New Product



949  
Grey Melange  
New Product



990  
Black  
New Product

**NEW**

## ESSENTIAL FULL ZIP SWEAT

### Features

- 100% polyester loopback
- Raised silicon print branding at hem
- Reverse coil zip front
- Hand pockets concealed in side seams
- Tonal embroidered funnel neck
- Bound cuff for sporty, luxe silhouette

**Composition:** 100% Polyester

**Sizes:** S, M, L, XL, 2XL

## ESSENTIAL ½ ZIP SWEAT 82135

**MUSTO**



949  
Grey Melange  
New Product



597  
Navy  
New Product



990  
Black  
New Product

**NEW**

### ESSENTIAL ½ ZIP SWEAT

#### Features

- 100% polyester loopback
- Raised silicon print branding at hem
- Reverse coil zip front
- Hand pockets concealed in side seams
- Tonal embroidered funnel neck
- Bound cuff for sporty, luxe silhouette

**Composition:** 100% Polyester

**Sizes:** S, M, L, XL, 2XL

# MUSTO HOODIE 82019

**MUSTO**



991  
Black



844  
Carbon



597  
Navy II



162  
Red II

## MUSTO HOODIE

### Features

- Soft cotton French terry
- Musto branding across chest
- Jersey lined hood
- Kangaroo pocket
- Drawstring adjustment hood
- Ribbed hem and cuffs

### Composition:

OUTER: 100% Cotton

### Sizes:

S, M, L, XL, 2XL

## CORSICA 100GM FLEECE 82012

**MUSTO**



597  
Navy II



563  
Olympian Blue



970  
Dark Grey II

 POLARTEC®

**YKK®**

### CORSICA 100GM FLEECE

#### Features

- Polartec® fleece keeps you warm and is highly breathable
- Full YKK® coil zip front opening
- Flatlock seams for comfort next to skin
- Zipped lower pockets for storage of belongings
- Musto branding to chest and sleeve
- Musto branding to back neck

#### Composition:

OUTER: 100% Recycled Polyester  
LINING: 100% Polyester

#### Sizes:

S, M, L, XL, 2XL

## CORSICA 100GM 1/2 ZIP FLEECE 82061

**MUSTO**



970  
Dark Grey II



597  
Navy II



### CORSICA 100GM 1/2 ZIP FLEECE

#### Features

- Polartec® fleece is warm yet breathable
- Zipped lower pockets for secure storage
- Flatlock seams provide comfort against skin
- Musto branding on chest, sleeve and nape of neck

#### Composition:

OUTER: 100% Recycled Polyester  
LINING: 100% Polyester

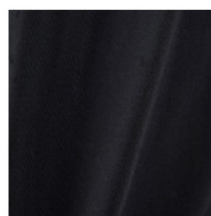
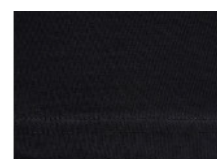
#### Sizes:

S, M, L, XL, 2XL



## MUSTO FAVOURITE T-SHIRT 80609

**MUSTO**



991  
Black



598  
True Navy



002  
White

### MUSTO FAVOURITE T-SHIRT

This is your classic summer Crew T-Shirt in a soft cotton jersey, designed in a variety of colours. A small, Musto red yacht is embroidered on the back yolk providing subtle, nautical details.

#### Features

- Crew neck shape
- Breathable and lightweight cotton construction
- Twin needle stitch

**Composition:** 100% Cotton, 180gsm Single Jersey

**Sizes:** XS, S, M, L, XL, 2XL

## WOMEN'S SARDINIA JACKET 2.0 82010



002  
White



169  
True Red



841  
Platinum



598  
True Navy



991  
Black



### WOMEN'S SARDINIA JACKET 2.0

Sail warm seas in the lightweight, breathable Women's Sardinia BR1 Jacket. Ideal for warm climates where, the Sardinia is waterproof, windproof and mesh lined for incredibly lightweight comfort against your base layer. Zipped side and chest pockets and an internal pocket with a headphones exit point keep your possessions and music close to hand. Cut in a smart, understated style for enhanced versatility.

#### Features

- 2-layer showerproof and breathable fabric to Musto's stringent BR1 standard, for persistent downpours
- Detachable and adjustable hood with a stiffened peak to keep run-off water away from your face
- YKK® VISLON® front zip with an internal, roll-over zip guard for added weather protection
- Two zipped side pockets and zipped chest pocket
- Internal pocket with a headphone exit point
- Scooped back hem for added coverage and a hem adjuster to keep the weather out
- Mesh lined for comfort against your skin and improved air circulation
- Hook and loop adjustable cuffs with a durable rubber cuff tab

## WOMEN'S CORSICA 100GM 1/2 ZIP FLEECE 82062

**MUSTO**



970  
Dark Grey II



597  
Navy II



### WOMEN'S CORSICA 100GM 1/2 ZIP FLEECE

#### Features

- Polartec® fleece keeps you warm and is highly breathable
- Pullover fleece with ½ zip fastening
- Flatlock seams for soft comfort against skin
- Zipped lower pockets for secure storage
- Musto branding on chest, sleeve and nape of neck

#### Composition:

OUTER: 100% Recycled Polyester  
LINING: 100% Polyester

#### Sizes:

8, 10, 12, 14, 16, 18

## WOMEN'S CORSICA 100GM FLEECE 82063

**MUSTO**



970  
Dark Grey II



597  
Navy II

**YKK®**

### WOMEN'S CORSICA 100GM FLEECE

#### Features

- Polartec® fleece keeps you warm and is highly breathable
- Full YKK® zip fastening
- Flatlock seams for soft comfort against skin
- Zipped lower pockets for secure storage
- Musto branding on chest, sleeve and nape of neck

#### Composition:

OUTER: 100% Recycled Polyester  
LINING: 100% Polyester

#### Sizes:

8, 10, 12, 14, 16, 18

## WOMEN'S MUSTO FAVOURITE T-SHIRT 80659



991  
Black



002  
White



598  
True Navy

### WOMEN'S MUSTO FAVOURITE T-SHIRT

A favourite for a reason. This Women's Musto Favourite T-Shirt features a pure cotton construction and twin needle stitch hem and cuffs for breathability and durability. A true staple, this garment can be worn alone or layered up on colder days.

#### Features

- Twin needle stitch hem and cuffs
- Red Yacht branding
- Crew neck shape
- Breathable and lightweight cotton construction

**Composition:** 100% Cotton, 180gsm Single Jersey

**Sizes:** 8, 10, 12, 14, 16, 18

## GTX RACE BOOT 80521



991  
Black



### GTX RACE BOOT

Built for racing, this GORE-TEX® Race Boot has been engineered using premium, full grain leather and ballistic nylon in the upper for unrivalled durability and complete protection. The toughest GORE-TEX® footwear membrane available provides complete waterproof protection and continuous climate control. Musto's lightweight, shock-absorbing midsole, combined with Grip Deck rubber and a Grip Flex tread, provides exceptional, multi-directional traction on deck. The toe box is wrapped with scratch rubber to protect it from damage and your feet are supported by the moulded comfort footbed.

#### Features

- GORE-TEX membrane for complete waterproof protection and exceptional breathability
- Premium full grain leather for durability
- Grip Flex multi-directional outsole grip for exceptional grip on wet surfaces
- A Grip Deck sole with a sticky rubber compound for sure grip on wet surfaces - non-marking
- Ballistic nylon in the upper for incredible durability
- EVA midsole, footbed and ankle protectors provide impact protection, comfort and support
- Microsiped outsole pods for lateral grip in wet conditions



## DYNAMIC PRO II 82026

**MUSTO**



991  
Black / White /  
True Red

841  
Platinum

### DYNAMIC PRO II

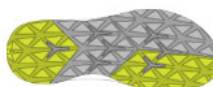
Racing boats keep getting lighter, faster and stronger; your equipment needs to evolve in pace. The Dynamic Pro II is the ultimate in innovative performance footwear. The gilly lacing system, the TPU welded overlay in the upper for lateral support and the shock absorbing heel cage ensure a secure and durable Dynamic Fit. A mono mesh construction provides ventilation, drainage and rapid drying time. Musto's lightweight, shock-absorbing midsole works with enhanced Grip Deck II rubber and Grip Flex tread to give exceptional, multi-directional traction on deck. This unique sole also features XPL drainage to prevent water pooling inside the shoe.

#### Features

- Elasticated Gilly cords hold the tongue against your foot for a dynamic, snug fit
- XPL water drainage technology to prevent pooling in the shoe
- Grip Flex multi-directional outsole grip for exceptional grip on wet surfaces
- A Grip Deck sole with a sticky rubber compound for sure grip on wet surfaces - non-marking
- Dynamic Gilly lacing system provides a secure and comfortable closure
- Single layer mesh construction for ventilation, drainage, fast drying and easy cleaning
- TPU on the forefoot adds protection
- TPU welded overlay along the sides for lateral support
- EVA midsole for shock absorption, comfort and protection

## DYNAMIC PRO II ADAPT 82027

**MUSTO**



841  
Platinum

581  
Ultra Marine

598  
True Navy

### DYNAMIC PRO II ADAPT

Racing boats keep getting lighter, faster and stronger; your equipment needs to evolve in pace. The Dynamic Pro II is the ultimate in innovative performance footwear. The gilly lacing system, the TPU welded overlay in the upper for lateral support and the shock absorbing heel cage ensure a secure and durable Dynamic Fit. A mono mesh construction provides ventilation, drainage and rapid drying time. Musto's lightweight, shock-absorbing midsole works with enhanced Grip Deck II rubber and Grip Flex tread to give exceptional, multi-directional traction on deck. This unique sole also features XPL drainage to prevent water pooling inside the shoe.

#### Features

- Elasticated Gilly cords hold the tongue against your foot for a dynamic, snug fit
- XPL water drainage technology to prevent pooling in the shoe
- Grip Flex multi-directional outsole grip for exceptional grip on wet surfaces
- A Grip Deck sole with a sticky rubber compound for sure grip on wet surfaces - non-marking
- Dynamic Gilly lacing system provides a secure and comfortable closure
- Single layer mesh construction for ventilation, drainage, fast drying and easy cleaning
- TPU on the forefoot adds protection
- TPU welded overlay along the sides for lateral support
- EVA midsole for shock absorption, comfort and protection
- Closed Cell Technology within the heel cage for anti-microbial protection

## WOMEN'S DYNAMIC PRO II ADAPT 82028

**MUSTO**



598  
True Navy / Deep  
Red / White

002  
White

### WOMEN'S DYNAMIC PRO II ADAPT

#### Features

- Grip Flex multi-directional outsole grip for exceptional grip
- A Grip Deck sole with a sticky rubber compound for sure grip on wet surfaces
- Dynamic Gilly lacing system provides a secure and comfortable closure
- Single layer mesh construction
- TPU on the forefoot adds protection
- TPU welded overlay along the sides for lateral support
- EVA midsole for shock absorption, comfort and protection
- Closed Cell Technology within the heel cage for anti-microbial protection

#### Composition:

Upper: Synthetic Mesh with TPU Overlays

Heel Counter: Injection EVA

Outsole: GripDeck Sticky Rubber Compound with EVA Midsole

#### Sizes:

5.5F, 6F, 6.5F, 7F, 7.5F, 8F, 8.5F, 9F, 9.5F, 10F

## NAUTIC ZEPHYR 82029

**MUSTO**



598  
True Navy /  
White



581  
Ultra Marine



002  
White

## NAUTIC ZEPHYR

### Features

- Vulcanized outsole/midsole
- Spacer mesh/air-mesh upper for breathability and comfort
- Removable EVA insole for comfort
- Lace-up

### Sizes:

7, 7.5, 8, 8.5, 9, 9.5, 10, 10.5, 11, 11.5, 12, 13

## DYNAMIC PRO LITE 80526

**MUSTO**



598  
True Navy

841  
Platinum

991  
Black

992  
Stealth

### DYNAMIC PRO LITE

An advanced combination of technical features for total performance on-deck. The Dynamic Pro Lite features an open mesh upper for breathability while an anti-odour treatment ensures prolonged freshness. Grip Deck II soles ensure superior underfoot stability and grip in wet conditions – a feature enhanced by the multidirectional Grip Flex outsole, for 360-degree traction. A speed lacing system offers a firm, anatomical fit. The lightest weight Musto shoe. Now featuring the Stealth colourway - a reflective shoe for a modernised aesthetic.

#### Features

- A Grip Deck sole with a sticky rubber compound for sure grip on wet surfaces - non-marking
- Musto outsole, offering Grip Flex stability with Musto pattern sole
- Dynamic Fit one-piece upper construction provides a secure and comfortable closure
- EVA midsole for shock absorption, comfort and protection
- EVA footbed for excellent shock absorption, light weight, salt water resistance and anti-odour
- Monolite Construction - a one-piece, ergonomic upper for superior comfort
- Speed lacing system: laces lie flat against the shoe for an anatomical comfort fit
- Closed Cell Technology of the compound gives anti-microbial protection, odour resistance and an easy clean surface



## NAUTIC SPEED 80527

**MUSTO**



598  
True Navy

841  
Platinum

991  
Black

### NAUTIC SPEED

Every sailor knows that footwear breathability is the key to staying fresh on deck. At just 300g, the lightweight Nautic Speed features an open mesh construction for enhanced airflow throughout the shoe, decreasing drying times, encouraging comfort and minimising the build-up of heat. For unwavering performance on-deck, the shoe features a Grip Deck outsole, for 360 degree traction. The footwear also supplies a highly protective fit through an EVA comfort footbed, for outstanding shock-absorption.

#### Features

- A Grip Deck sole with a sticky rubber compound for sure grip on wet surfaces - non-marking
- Grip Flex multi-directional outsole grip for exceptional grip on wet surfaces
- EVA footbed for excellent shock absorption, light weight, salt water resistance and anti-odour
- EVA midsole for shock absorption, comfort and protection
- Closed Cell Technology within the molecular structure of the compound gives anti-microbial protection, odour resistance and an easy clean surface
- One-piece vamp and tongue construction
- Open mesh quarter for improved breathability
- Salt and stain resistant 1.4-1.6 leather
- Multi-directional outsole grip for 360 degree traction
- Non-marking outsole



## WOMEN'S NAUTIC ZEPHYR 82030

**MUSTO**



002  
White



598  
True Navy /  
White

## WOMEN'S NAUTIC ZEPHYR

### Features

- Vulcanized outsole/midsole
- Spacer mesh/air-mesh upper for breathability and comfort
- Removable EVA insole for comfort
- Lace-up

### Sizes:

5.5F, 6F, 6.5F, 7F, 7.5F, 8F, 8.5F, 9F, 9.5F, 10F

## EVOLUTION FAST DRY BRIMMED HAT 80033



### EVOLUTION FAST DRY BRIMMED HAT

Constructed from fast dry fabric, this Evolution Fast Dry Brimmed Hat delivers comfort over extended periods of activity or when exposed to sunlight. An ultraviolet protection rating of 40 and a wide brimmed edge supplies enhanced sun protection while a popper fastening secures the brim to the hat when not required. Side vents provide ventilation to keep you cool and comfortable. Adjust the chin strap to create a secure fit and prevent it flying off during high winds.

#### Features

- A fast wicking treatment enhances moisture management to keep you dry and comfortable
- Durable Water Repellent (DWR) coating to help water bead and run off for faster drying times
- Ultraviolet Protection Factor (UPF) of 40 to shield you in extended, moderate sun exposure
- Drawstring adjuster keeps the cap secure in wind
- Brim popper fastener to keep the brim turned up when you want it out of the way

**Composition:** 100% Polyester

**Sizes:** S, M, L

## EVOLUTION RACE VISOR 80050

**MUSTO**



991  
Black

002  
White

**DWR 40**  
UPF40

### EVOLUTION RACE VISOR

Constructed from fast-drying fabric, this Evolution Race Visor ensures comfort and enhanced visibility on the boat.

#### Features

- Fast drying fabric to keep you comfortable
- UPF 40
- DWR Coating

#### Variante prodotto: 991

**Composition:** 100% Polyester  
**Sizes:** One Size

#### Variante prodotto: 002

**Composition:** 100% Polyester  
**Sizes:** One Size

## FAST DRY TECHNICAL CAP 80106

**MUSTO**



002  
White

991  
Black

**40**  
UPF40

### FAST DRY TECHNICAL CAP

This Evolution Fast Dry Technical Cap is made for use on the water. With open mesh side panels for ventilation and fast dry fabric on the peak and across the top of the hat, you will dry off in no time. The peak and UPF40 fabric will shield your eyes from the sun and the reflective detail on the front edge will keep you visible in low light.

#### Features

- Fast drying fabric to keep you comfortable
- Durable Water Repellent (DWR) coating to help water bead and run off for faster drying times
- Ultraviolet Protection Factor (UPF) of 40 to shield you in extended, moderate sun exposure
- Mesh panels for added breathability and ventilation
- Peak to shield your eyes from the sun
- Reflective details keep you visible in low light
- Elasticated back strap for a snug fit

#### Composition:

100% Polyester + UPF 40 + DWR Finish

#### Sizes:

One Size

## CORPORATE FAST DRY CAP 80700

**MUSTO**



991  
Black

841  
Platinum

598  
True Navy

812  
Light Stone

169  
True Red

**DWR**

### CORPORATE FAST DRY CAP

If you know you will get wet, or just need a cap that will dry quickly after sweating, choose the Corporate Fast Dry Cap. The fabric dries rapidly and protects you from the sun with its added UV protection properties. The peak will shield your eyes from the sun and the rear adjustment gives you a secure fit. Don't lose it in high winds; attach the retainer clip. You can also get this branded with your team, club or company name.

#### Features

- Fast drying fabric to keep you comfortable
- Ultraviolet Protection Factor (UPF) of 40 to shield you in extended, moderate sun exposure
- Rear adjuster for a snug fit
- DWR coating
- Hat retainer clip to attach to your hood or collar to keep your hat secure on windy days

**Composition:** 100% Polyester

**Sizes:** One Size

## MUSTO COMMUTER BACKPACK 86001



991  
Black

### MUSTO COMMUTER BACKPACK

#### Features

- Plain weave fabric with DWR and PU backing
- Main compartment with padded computer sleeve
- Front compartment with pen holders and multiple pockets for organization
- Two side water bottle pockets
- Fully adjustable shoulder strap and sternum strap
- Air mesh back panel and shoulder strap for comfort
- 31L volume
- 47cm x 33cm x 21cm

#### Composition:

OUTER: 100% Polyamide  
BACKING: 100% Polyurethane

#### Sizes:

One Size



## MUSTO 30L DUFFEL BAG 86002

**MUSTO**



991  
Black

**YKK®**

### MUSTO 30L DUFFEL BAG

#### Features

- PVC-Free
- Large U-shaped opening into main compartment
- Separate shoe pocket for storage of shoes or clothes
- Fully padded shoulder straps hidden in top lid pocket
- YKK zippers
- Main zipper is lockable
- 30L volume, 53cm x 24cm x 24cm

#### Composition:

75% Thermoplastic Polyurethane, 25% Polyester

#### Sizes:

One Size

# MUSTO 70L DUFFEL BAG 86004

**MUSTO**



991  
Black

**YKK®**

## MUSTO 70L DUFFEL BAG

### Features

- 600D Polyester with TPU, Nylon Honeycomb with PU backing
- PVC-Free
- Large U-shaped opening into main compartment
- Separate shoe pocket for storage of shoes or clothes
- Fully padded shoulder straps hidden in top lid pocket
- YKK zippers
- Main zipper is lockable
- 70L volume, 68cm x 32cm x 32cm

### Composition:

75% Thermoplastic Polyurethane, 25% Polyester

### Sizes:

One Size

## MUSTO 50L DUFFEL BAG 86003

**MUSTO**



991  
Black

**YKK®**

### MUSTO 50L DUFFEL BAG

#### Features

- PVC-Free
- Large U-shaped opening into main compartment
- Separate shoe pocket for storage of shoes or clothes
- Fully padded shoulder straps hidden in top lid pocket
- YKK zippers
- Main zipper is lockable
- 50L volume, 64cm x 28cm x 28cm

#### Composition:

75% Thermoplastic Polyurethane, 25% Polyester

#### Sizes:

One Size

## MUSTO 90L DUFFEL BAG 86005

**MUSTO**



991  
Black

**YKK®**

### MUSTO 90L DUFFEL BAG

#### Features

- 600D Polyester with TPU, Nylon Honeycomb with PU backing
- PVC-Free
- Large U-shaped opening into main compartment
- Separate shoe pocket for storage of shoes or clothes
- Fully padded shoulder straps hidden in top lid pocket
- YKK zippers
- Main zipper is lockable
- 90L volume, 73cm x 35cm x 35cm

#### Composition:

75% Thermoplastic Polyurethane, 25% Polyester

#### Sizes:

One Size

# WATERPROOF DRY CARRYALL 65L 80040

**MUSTO**



991  
Black/Grey

## WATERPROOF DRY CARRYALL 65L

Please Note: This waterproof accessory is not submersible. To keep your essentials dry and undamaged, please do not submerge this bag.

### Features

- Heat sealed seams for a watertight construction
- Rollover, watertight top secured with a buckle
- Removable, adjustable shoulder strap for easy carrying
- Carry handles for easy carrying
- Pressure valve to release air to reduce bulk
- Translucent window in the front to help locate your belongings
- Name plate for labelling your luggage
- 65 litre capacity
- L=70cm, H=30cm, W=30cm

**Composition:** 100% Polyvinyl Chloride

**Sizes:** One Size

# WATERPROOF DRY BACKPACK 40L 80041

**MUSTO**



991  
Black/Grey

## WATERPROOF DRY BACKPACK 40L

Please Note: This waterproof accessory is not submersible. To keep your essentials dry and undamaged, please do not submerge this bag.

### Features

- Waterproof construction to protect your belongings in torrential rain and spray
- Heat sealed seams for a watertight construction
- Rollover, watertight top secured with a buckle
- Pressure valve to release air to reduce bulk
- Translucent window in the front to help locate your belongings
- Backpack straps for easy carrying
- Grab handle for easy lifting and carrying

**Composition:** 100% Polyvinyl Chloride

**Sizes:** One Size



## ESSENTIAL 20L DRY TUBE 80066

**MUSTO**



991  
Black

## ESSENTIAL 20L DRY TUBE

### Features

- Rollover, watertight top secured with a buckle that can be used as a handle
- Translucent window in the front to help locate your belongings
- Removable shoulder strap for easy carrying
- 20 litre capacity
- Dimensions: Diameter: 24cm, Height: 40cm

### Composition:

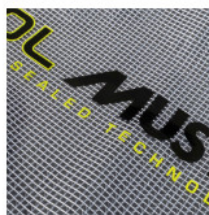
Main: 65% Nylon with 35% PVC Backing  
Base: Tarpaulin with 100% PVC Coating  
Window Panel: 100% PVC Nylon Mesh

### Sizes:

One Size

## ESSENTIAL 10L DRY TUBE 80067

**MUSTO**



991  
Black

## ESSENTIAL 10L DRY TUBE

### Features

- Rollover, watertight top secured with a buckle that can be used as a handle
- Translucent window in the front to help locate your belongings
- Removable shoulder strap for easy carrying
- 10 litre capacity
- Dimensions: Diameter: 19cm, Height: 38cm

### Composition:

Main: 57% Nylon with 43% PVC Backing  
Base: Tarpaulin with 100% PVC Coating  
Window Panel: 100% PVC Nylon Mesh

### Sizes:

One Size

## ESSENTIAL 1.5L DRY TUBE 80070

**MUSTO**



991  
Black

## ESSENTIAL 1.5L DRY TUBE

### Features

- Rollover, watertight top secured with a buckle that can be used as a handle
- Translucent window in the front to help locate your belongings
- Removable shoulder strap for easy carrying
- 1.5 litre capacity
- Diameter: 23cm, Height: 30cm

### Composition:

Main: 57% Nylon with 43% PVC Backing  
Base: Tarpaulin with 100% PVC Coating  
Window Panel: 100% PVC Nylon Mesh

### Sizes:

One Size



## GENOA SMALL CARRYALL 80039

**MUSTO**



145  
Magenta

690  
Gbr Blue

598  
True Navy

002  
White

530  
Surf

163  
Red

### GENOA SMALL CARRYALL

This classic Genoa Small Carryall is engineered in a splash-resistant fabric with a heavy duty zip closure and is ideal for your day on the water. A Velco-secured front pocket provides additional storage and a removable, adjustable shoulder strap makes it easy to carry.

#### Features

- Splash resistant fabric to keep contents dry
- Removable, adjustable shoulder strap for easy carrying
- Carry handles for easy carrying
- Size - 39 x 25 x 21cm (W x H x D)

#### Variante prodotto: 145, 690, 598, 002

**Composition:** 100% Polyvinyl Chloride

**Sizes:** One Size

#### Variante prodotto: 530, 163

**Composition:** 100% Polyvinyl Chloride

**Sizes:** One Size

## GENOA MINI CARRYALL 80042

**MUSTO**



598  
True Navy

145  
Magenta

002  
White

844  
Carbon

### GENOA MINI CARRYALL

This Genoa Mini Carryall has been engineered from splash-resistant fabric with a heavy-duty zip closure to keep your possessions secure on any excursion. A Velco-secured front pocket provides you with additional storage and a removable, adjustable shoulder strap makes this bag easy to carry.

#### Features

- Splash resistant fabric to keep contents dry
- Removable, adjustable shoulder strap for easy carrying
- Carry handles for easy carrying
- Dimensions: 30 x 12cm x 12cm (L x H x W)

**Composition:** 100% Polyvinyl Chloride

**Sizes:** One Size

## MUSTO THERMAL SHORT SOCK 86041



990  
Black  
New Product

**NEW**

### MUSTO THERMAL SHORT SOCK

#### Features

- Thermal yarn mix, breathing
- Insulating, yet breathable wicking sweat fabric
- Stretch ribbed cuff

#### Composition:

41% Wool  
41% Polypropylene  
16% Polyamide  
2% Elastane

#### Sizes:

S, M, L



## ESS 3 PACK TRAINER SOCK 86039

**MUSTO**



002  
White  
New Product

**NEW**

### ESS 3 PACK TRAINER SOCK

#### Features

- Lightweight blend (cotton, polyamide, elastane)
- Exceptional stretch
- Breathable fabric

#### Composition:

58% Cotton  
38% Polyamide  
4% Elastane

#### Sizes:

S/M, L/XL

## PERFORMANCE SHORT FINGER GLOVE 80104



991  
Black

169  
True Red



### PERFORMANCE SHORT FINGER GLOVE

Experience dynamic movement and resilient protection in these premium Performance Short Fingered Glove. A 4-way stretch dynamic mesh construction combine breathable, anatomical comfort with a spectrum of motion enhanced by the glove's dynamic fit system. This system enables free knuckle movement for complete comfort. A GripFlex palm ensures superior grip with an extended cuff for coverage.

#### Features

- Grip Flex palm for superior grip
- Strategic protection panels
- Extended elasticated cuff
- Hypalon knuckle protectors
- Hypalon oversized wrist closure
- Watch cutaway in cuff
- Lightweight construction

## ESSENTIAL SAILING SHORT FINGER GLOVE 80102

**MUSTO**



169  
True Red

991  
Black



### ESSENTIAL SAILING SHORT FINGER GLOVE

A 4-way stretch dynamic mesh construction has ensured that these Essential Short Finger Sailing Gloves combine breathable, anatomical comfort with complete freedom of movement. Strategic protection panels safeguard your hands from the rigours of the boat while oversized Velcro wrist closures provide a tailored fit.

#### Features

- Dynamic Fit one-piece upper construction provides a secure and comfortable closure
- 4-way stretch fabric for maximum freedom of movement
- Lightweight construction for comfort
- Strategic protection panels
- Internal cuff elastics for greater heat retention and a tailored fit

#### Composition:

70% Nylon,  
20% PU,  
6% Neoprene  
4% Spandex®

#### Sizes:

XS, S, M, L, XL, 2XL

## DIPPED GRIP GLOVE (PACK OF 3) 80100

**MUSTO**



352  
Sulphur  
Spring/Black

### DIPPED GRIP GLOVE (PACK OF 3)

These Dipped Grip Gloves are made for excellent grip in wet conditions. They have a short usage life but are ideal for environments like dinghy sailing. That's why they come in a pack of 3. The breathable woven mesh allows sweat and moisture to escape while the rubber dipped fingers and palms offer brilliant grip.

#### Features

- Breathable woven mesh construction allows moisture to escape
- Rubber dipped fingers and palm give excellent grip in wet conditions
- Short use life for dinghy sailing and around the marina
- Pre-curved finger construction for increased comfort and dexterity
- Comes in a pack of 3

**Composition:** 65% Latex, 35% Polyester

**Sizes:** S, M, L, XL

## D3O KNEEPADS 80049



991  
Black

D3O®  
\*\*\*\*\*

### D3O KNEEPADS

Durable and ergonomic, these knee pads provide exceptional impact absorption. D3O® intelligent molecules outperform soft foams of the same thickness by up to six times. The material flows with you during movement but locks together to absorb impact energy, keeping your knees cushioned and safe. The Kevlar® knee patches add durability and abrasion resistance for longer protection.

#### Features

- D3O® knee pads absorb impact, flex with you as you move and lock on impact for your protection
- Abrasion resistant and incredibly strong, Kevlar® prevents wear
- Ergonomic construction for a close fit and minimal bulk

#### Composition:

OUTER: 100% Polyester  
IMPACT PROTECTION: D3O®

#### Sizes:

One Size



# NEOPRENE KNEEPADS 80047



991  
Black

## NEOPRENE KNEEPADS

When you get constantly knocked around in boats, your knees often suffer the most. Get cushioning knee protection with these Neoprene Kneepads so you can focus on your performance rather than dodging impact. Suitable for all types of sailing requiring knee protection.

### Features

- Neoprene with cushioning to protect your knees from knocks
- Ergonomic construction for a close fit and minimal bulk

**Composition:** 100% Neoprene

**Sizes:** S, M, L



## NEOPRENE SUNNIES RETAINER (PACK OF 10) 80034

**MUSTO**



991  
Black

### NEOPRENE SUNNIES RETAINER (PACK OF 10)

Keep your sunglasses secure on your head with these essential Neoprene Sunnies Retainers. Constructed from stretch neoprene, they will sit comfortably and securely against your head. Invest in this simple yet effective insurance for when you're sailing or active outdoors. Comes in a pack of 10.

#### Features

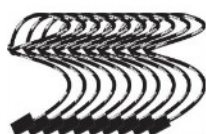
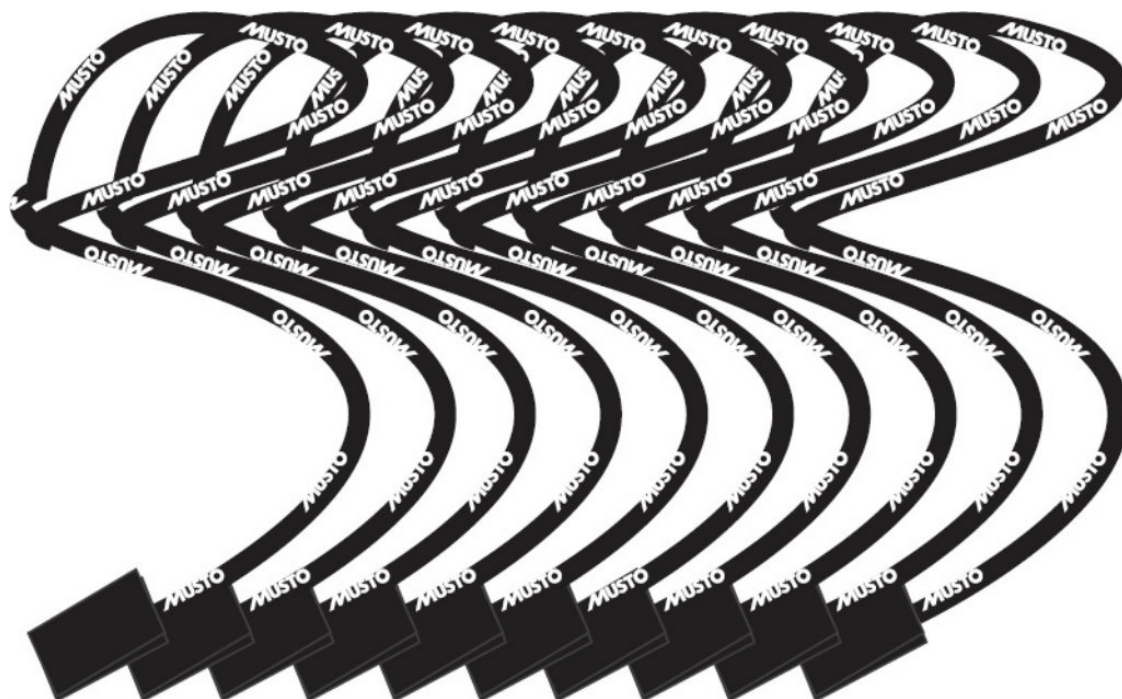
- Stretch neoprene for maximum freedom of movement and a good fit
- Sold as a pack of 10

**Composition:** 100% Neoprene

**Sizes:** One Size

## RETAINER CLIPS (PACK OF 10) 80062

**MUSTO**



991  
Black

### RETAINER CLIPS (PACK OF 10)

Keep your hat securely on in gusts. This pack of 10 Retainer Clips are ideal for sailing and outdoor sports. Simply attach the loop to the adjuster on your cap and the corrosion resistant clip to your hood or collar.

#### Features

- Musto branded shock cord stretches and is durable - 17cm long
- Hat retainer clip to attach to your hood or collar to keep your hat secure on windy days

#### Composition:

Shock Cord: 100% Polyester  
Clip: Plastic

#### Sizes:

One Size

## EVO YACHT BELT 80023



169  
True Red

991  
Black

841  
Platinum

598  
True Navy

### EVO YACHT BELT

Made with a durable polyester webbing, this smart but durable Evolution Yacht Belt is made for the sailor. The metal clip and stopper are built to last and are finished in matt black for a sleek finish. A hidden bottle opener in the back of the buckle is ideal for drinks on deck. A subtle, embossed Musto yacht completes the look.

#### Features

- Durable polyester webbing construction
- Secure metal flip buckle and end stopper to secure the belt
- Bottle opener on the back of the buckle

**Composition:** 100% Polyester Webbing

**Sizes:** One Size

## EVO SAILING BELT 80051

**MUSTO**



991  
Black

841  
Platinum

### EVO SAILING BELT

This heavy duty polyester canvas webbed belt is incredibly durable and ideal for the sailor. Designed with Musto branded tape, this Evolution Sailing Belt is fastened with a D-ring for a secure closure.

#### Features

- Durable polyester webbing construction
- D-ring fastening for a secure closure

**Composition:** 90% Polyester, 10% Rubber

**Sizes:** XS/S, M/L, XL/2XL

Indice

<b>Sailing / Sailing / MPX</b>		<b>2</b>
80824	MPX GORE-TEX PRO OFFSHORE SMOCK	2
80823	MPX GORE-TEX PRO OFFSHORE JACKET	3
80909	WOMEN'S MPX GORE-TEX PRO OFFSHORE JACKET	4
80826	MPX GORE-TEX PRO RACE JACKET	5
80827	MPX GORE-TEX PRO RACE SMOCK	6
80828	MPX GORE-TEX PRO RACE DRY SMOCK	7
80851	MPX GORE-TEX PRO OFFSHORE TROUSERS	8
80914	WOMEN'S MPX GORE-TEX PRO OFFSHORE TROUSERS	9
80808	MPX GORE-TEX RACE SALOPETTE	10
<b>Sailing / Sailing / LPX</b>		<b>11</b>
82100	LPX GORE-TEX AERO JACKET	11
81206	LPX GORE-TEX JACKET	12
81207	LPX GORE-TEX SMOCK	13
81212	LPX GORE-TEX SALOPETTE	14
81209	LPX GORE-TEX SHORT	15
<b>Sailing / Sailing / BR2</b>		<b>16</b>
80811	BR2 OFFSHORE JACKET	16
80902	WOMEN'S BR2 OFFSHORE JACKET	17
80812	BR2 COASTAL JACKET	18
80903	WOMEN'S BR2 COASTAL JACKET	19
80857	BR2 OFFSHORE TROUSERS	20
80917	WOMEN'S BR2 OFFSHORE TROUSERS	21
<b>Sailing / Sailing / BR1</b>		<b>22</b>
81208	BR1 INSHORE JACKET	22
81221	WOMEN'S BR1 INSHORE JACKET	23
80792	JUNIOR BR1 COASTAL JACKET	24
80855	BR1 TROUSERS	25
80918	WOMEN'S BR1 TROUSERS	26
80892	BR1 CORE TROUSERS	27
80891	BR1 HI-BACK TROUSERS	28
80556	JUNIOR BR1 TROUSERS	29
<b>Sailing / Sailing / Layering</b>		<b>30</b>
80843	THERMAL BASE LAYER LONG SLEEVE TOP	30
80844	THERMAL BASE LAYER TROUSERS	31
80880	ACTIVE BASE LAYER LONG SLEEVE TOP	32
80881	ACTIVE BASE LAYER ZIP NECK TOP	33
80912	WOMEN'S ACTIVE BASE LAYER LONG SLEEVE TOP	34
80882	ACTIVE BASE LAYER TROUSERS	35
80913	WOMEN'S ACTIVE BASE LAYER TROUSERS	36
<b>Sailing / Dinghy / Championship</b>		<b>37</b>
80818	CHAMPIONSHIP SMOCK	37
80895	CHAMPIONSHIP FLEECE AQUA LS TOP	38
80896	CHAMPIONSHIP HYDROTHERM LS TOP	39
80848	CHAMPIONSHIP HYDROTHERM PANT	40
80835	CHAMPIONSHIP DECK SHIELD SHORT	41
80849	CHAMPIONSHIP DECK SHIELD PANT	42
80834	FOIL DECK SHIELD HIKERS	43
80901	INSIGNIA UV FAST DRY LONG SLEEVE T-SHIRT	44
80900	INSIGNIA UV FAST DRY SHORT SLEEVE T-SHIRT	45
80897	SUNBLOCK LONG SLEEVE RASH GUARD	46
80898	SUNBLOCK SHORT SLEEVE RASH GUARD	47
80861	FOILING RACE BIB	48
80864	FOILING SUNBLOCK IMPACT TOP	49
80852	FOILING SUNBLOCK IMPACT LONG JOHN	50
80886	CHAMPIONSHIP BUOYANCY AID	51
86000	REGATTA BUOYANCY AID	52
<b>Sailing / Dinghy / Youth Championship</b>		<b>53</b>
80791	YOUTH CHAMPIONSHIP SMOCK	53
80801	YOUTH CHAMPIONSHIP THERMOHOT TOP	54
80796	YOUTH CHAMPIONSHIP THERMOCOOL TOP	55
80793	YOUTH CHAMPIONSHIP DECK SHIELD HIKERS	56
80798	YOUTH CHAMPIONSHIP SUNBLOCK LONG SLEEVE RASH GUARD	57
80802	YOUTH INSIGNIA UV FAST DRY SHORT SLEEVE T-SHIRT	58
80803	YOUTH INSIGNIA UV FAST DRY LONG SLEEVE T-SHIRT	59
<b>Sailing / Evolution / Mens</b>		<b>60</b>
80779	CREW SOFTSHELL JACKET	60
80780	CREW SOFTSHELL GILET	61
82041	EVOLUTION FULL ZIP TECHNICAL SWEAT	62

82042	EVOLUTION LOGO CREW SWEAT	63
82043	EVOLUTION LOGO HOODIE SWEAT	64
80407	SYNERGY 1/2 ZIP MICROFLEECE	65
80408	SYNERGY FLEECE JACKET	66
81147	EVOLUTION SUNBLOCK LONG SLEEVE POLO 2.0	67
81148	EVOLUTION SUNBLOCK SHORT SLEEVE POLO 2.0	68
81155	EVOLUTION SUNBLOCK LONG SLEEVE T-SHIRT 2.0	69
81154	EVOLUTION SUNBLOCK SHORT SLEEVE T-SHIRT 2.0	70
82002	EVOLUTION PERFORMANCE TROUSERS 2.0	71
81151	EVOLUTION DECK FAST DRY UV TROUSERS	72
82001	EVOLUTION PERFORMANCE SHORT 2.0	73
82000	EVOLUTION DECK UV FAST DRY SHORT	74
80438	RIB UV FAST DRY SHORT	75
<b>Sailing / Evolution / Womens</b>		<b>76</b>
80472	WOMEN'S CREW SOFTSHELL JACKET	76
81156	WOMEN'S EVOLUTION SUNBLOCK SHORT SLEEVE POLO 2.0	77
81162	WOMEN'S EVOLUTION SUNBLOCK LONG SLEEVE TEE 2.0	78
81161	WOMEN'S EVOLUTION SUNBLOCK SHORT SLEEVE T-SHIRT 2.0	79
82005	WOMEN'S EVOLUTION PERFORMANCE TROUSERS 2.0	80
82003	WOMEN'S EVOLUTION PERFORMANCE SHORT 2.0	81
82004	WOMEN'S EVOLUTION DECK UV FAST DRY SHORT	82
80772	WOMEN'S EVOLUTION UV FAST DRY SKORT	83
80491	WOMEN'S RIB UV FAST DRY SHORT	84
<b>Sailing / Lifestyle / Mens</b>		<b>85</b>
82006	SARDINIA JACKET 2.0	85
82007	SARDINIA GILET 2.0	86
82018	SARDINIA 1/2 ZIP	87
82136	ESSENTIAL FULL ZIP SWEAT	88
82135	ESSENTIAL ½ ZIP SWEAT	89
82019	MUSTO HOODIE	90
82012	CORSICA 100GM FLEECE	91
82061	CORSICA 100GM 1/2 ZIP FLEECE	92
80609	MUSTO FAVOURITE T-SHIRT	93
<b>Sailing / Lifestyle / Womens</b>		<b>94</b>
82010	WOMEN'S SARDINIA JACKET 2.0	94
82062	WOMEN'S CORSICA 100GM 1/2 ZIP FLEECE	95
82063	WOMEN'S CORSICA 100GM FLEECE	96
80659	WOMEN'S MUSTO FAVOURITE T-SHIRT	97
<b>Sailing / Footwear, Luggage &amp; Accessories / Footwear</b>		<b>98</b>
80521	GTX RACE BOOT	98
82026	DYNAMIC PRO II	99
82027	DYNAMIC PRO II ADAPT	100
82028	WOMEN'S DYNAMIC PRO II ADAPT	101
82029	NAUTIC ZEPHYR	102
80526	DYNAMIC PRO LITE	103
80527	NAUTIC SPEED	104
82030	WOMEN'S NAUTIC ZEPHYR	105
<b>Sailing / Footwear, Luggage &amp; Accessories / Headwear</b>		<b>106</b>
80033	EVOLUTION FAST DRY BRIMMED HAT	106
80050	EVOLUTION RACE VISOR	107
80106	FAST DRY TECHNICAL CAP	108
80700	CORPORATE FAST DRY CAP	109
<b>Sailing / Footwear, Luggage &amp; Accessories / Luggage</b>		<b>110</b>
86001	MUSTO COMMUTER BACKPACK	110
86002	MUSTO 30L DUFFEL BAG	111
86004	MUSTO 70L DUFFEL BAG	112
86003	MUSTO 50L DUFFEL BAG	113
86005	MUSTO 90L DUFFEL BAG	114
80040	WATERPROOF DRY CARRYALL 65L	115
80041	WATERPROOF DRY BACKPACK 40L	116
80066	ESSENTIAL 20L DRY TUBE	117
80067	ESSENTIAL 10L DRY TUBE	118
80070	ESSENTIAL 1.5L DRY TUBE	119
80039	GENOA SMALL CARRYALL	120
80042	GENOA MINI CARRYALL	121
<b>Sailing / Footwear, Luggage &amp; Accessories / Socks</b>		<b>122</b>
86041	MUSTO THERMAL SHORT SOCK	122
86039	ESS 3 PACK TRAINER SOCK	123
<b>Sailing / Footwear, Luggage &amp; Accessories / Gloves</b>		<b>124</b>
80104	PERFORMANCE SHORT FINGER GLOVE	124
80102	ESSENTIAL SAILING SHORT FINGER GLOVE	125



80100	DIPPED GRIP GLOVE (PACK OF 3)	126
<b>Sailing / Footwear, Luggage &amp; Accessories / Accessories</b>		<b>127</b>
80049	D3O KNEEPADS	127
80047	NEOPRENE KNEEPADS	128
80034	NEOPRENE SUNNIES RETAINER (PACK OF 10)	129
80062	RETAINER CLIPS (PACK OF 10)	130
<b>Sailing / Footwear, Luggage &amp; Accessories / Belts</b>		<b>131</b>
80023	EVO YACHT BELT	131
80051	EVO SAILING BELT	132